

GENERAL NOTES:

LEGEND

A- OSS CENTER

B- PUBLIC TOILET

C- STAFF TOILET

D- ELEVATED WATER TANK SEAT

E- SEPTIC TANK

F- SOAK AWAY PIT

G- COVERED WALKWAY

H- MAIN ROAD

	/	/		
	/	/		
	/	/		
	/	/		
	/	/		
	/	/		
	/	/		
	/	/		
	/	/		
	/	/		
0	/	/		
Rev.:	Date:	Description:	Approved	

KEY PLAN

All information in this document is the property of UNOPS and cannot be copied anywhere but in this project without prior written consent of UNOPS.

Funded By:

United Nations Higher Commission for Refugees Office for the AU ( UNHCR)

Partner:

United Nations Higher Commission for Refugees Office for the AU ( UNHCR)

Program:

Rehabilitation of UNHCR One-Stop-Shop (OSS) Registration Model

Implemented By:

UNOPS ,ETHIOPIA OPERATIONAL HUB

Project Name:

BOKOLMANYO OSS CENTER

Design:

UNOPS ,ETHIOPIA OPERATIONAL HUB

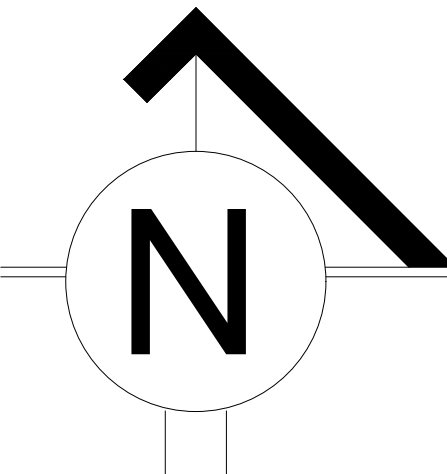
Drawing Title:

EXISTING SITE PLAN

UNOPS

Designed by	Discipline:	Dr. No:	Tot. No:	Rev No:
MM	AR	01	16	R0
Drawn:	Checked:	Approved:	Size:	Scale:
MM	BM	SM	A1	1:150
				Date:
				02 / 05 /2021
				Rev.:
				0

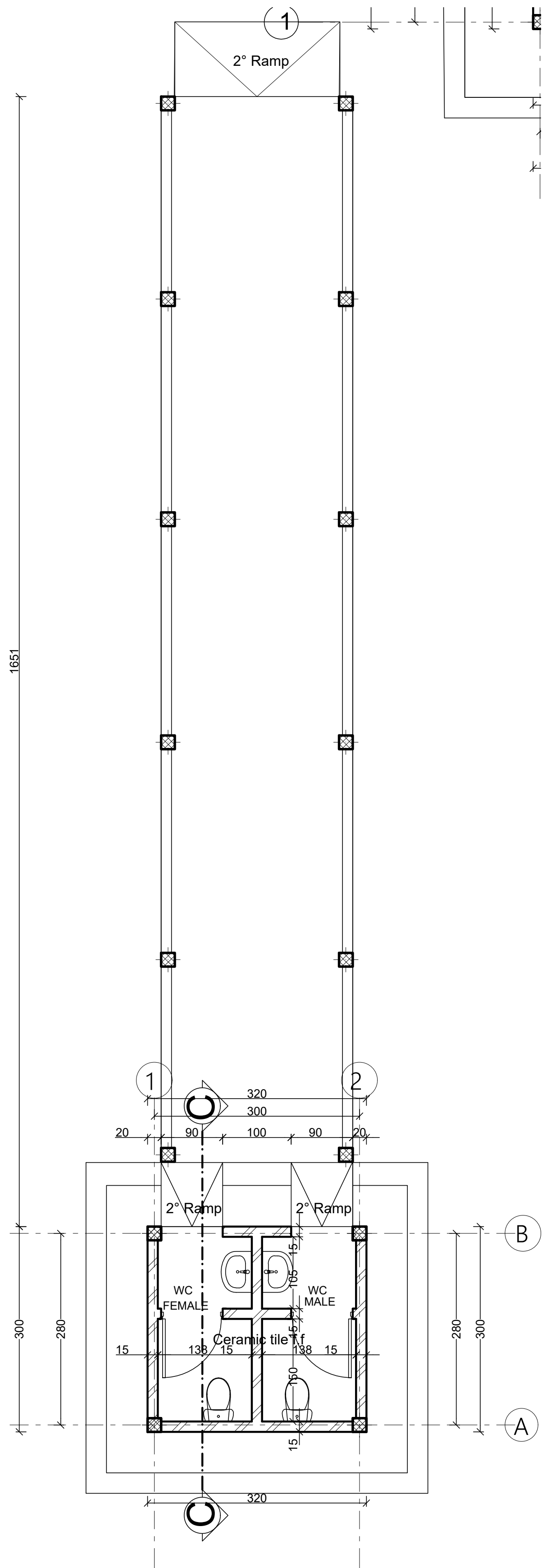




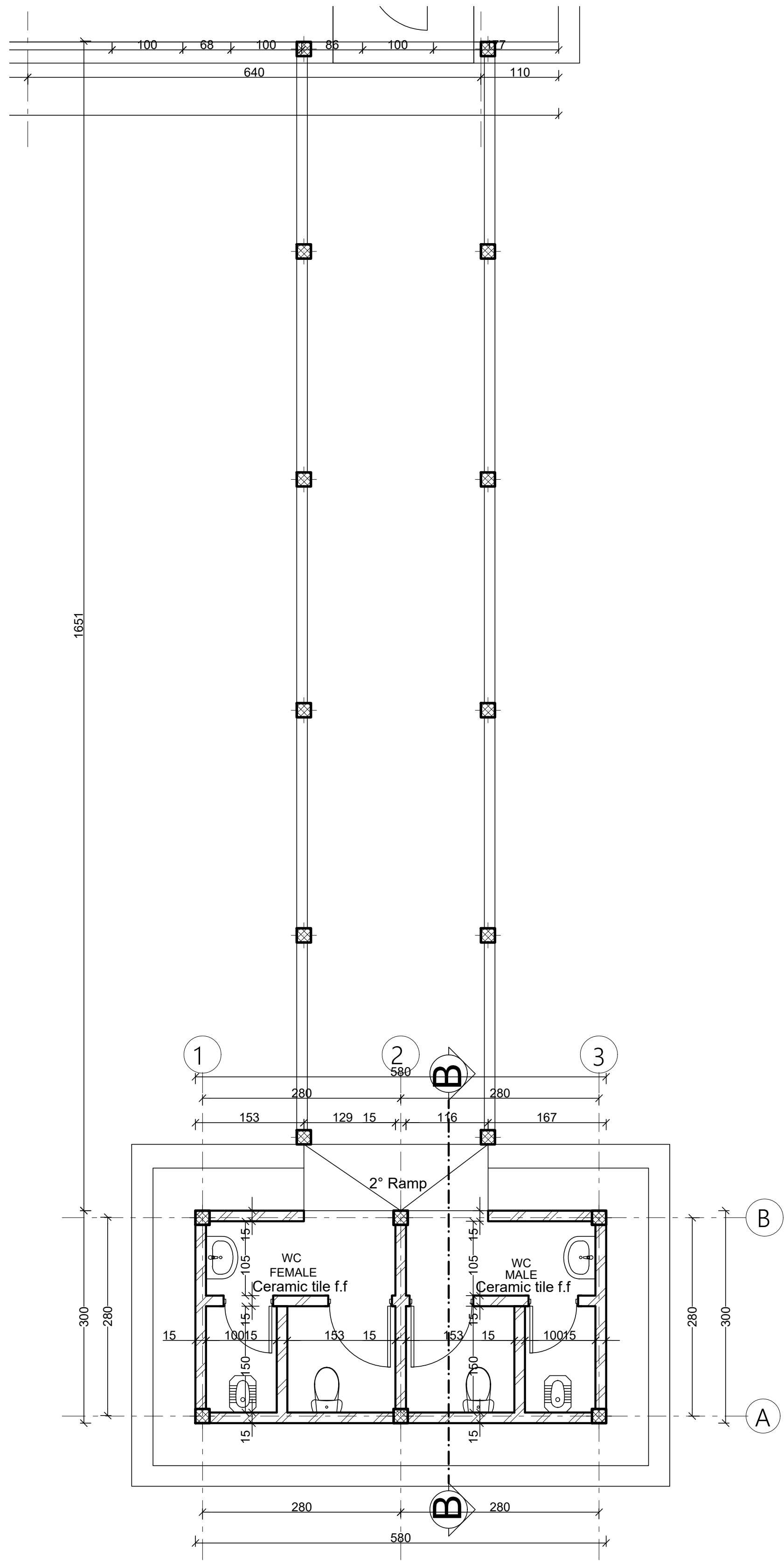
Designed by			Discipline:	Dr. No:	Tot. No:	Rev No:		
MM			AR	02	16	R0		
Drawn:	Checked:	Approved:	Size:	Scale:	Date:	Rev.:		
MM	BM	SM	A1	1:150	02 / 05 / 2021	0		







Ground Floor Plan  
sc. 1:50 (Staff Toilet)



Ground Floor Plan  
sc. 1:50 (Guest Toilet)

GENERAL NOTES:

	/	/		
	/	/		
	/	/		
	/	/		
	/	/		
	/	/		
	/	/		
	/	/		
	/	/		
	/	/		
0	/	/		
Rev.:	Date:	Description:		Approved

KEY PLAN

All information in this document is the property of UNOPS and cannot be copied anywhere but in this project without prior written consent of UNOPS.

Funded By:	Partner:
United Nations Higher Commission for Refugees Office for the AU ( UNHCR)	United Nations Higher Commission for Refugees Office for the AU ( UNHCR)
Program:	Implemented By:
Rehabilitation of UNHCR One-Stop-Shop (OSS) Registration Model	UNOPS ETHIOPIA OPERATIONAL HUB
Project Name:	Design:
BOKOLMANYO OSS CENTER	UNOPS ETHIOPIA OPERATIONAL HUB

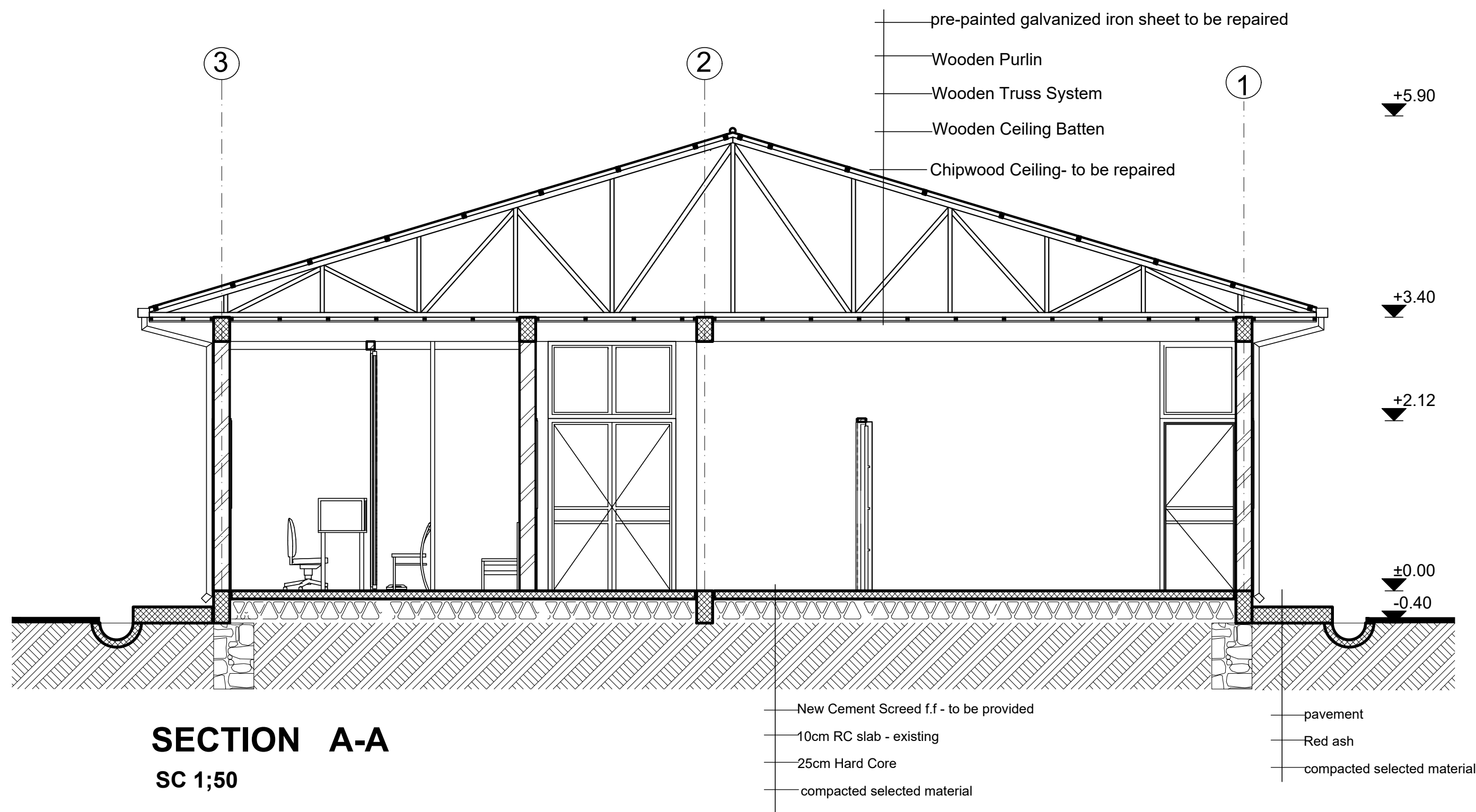
Drawing Title:

EXISTING TOILET'S FLOOR PLAN  
(STAFF & GUEST TOILETS)

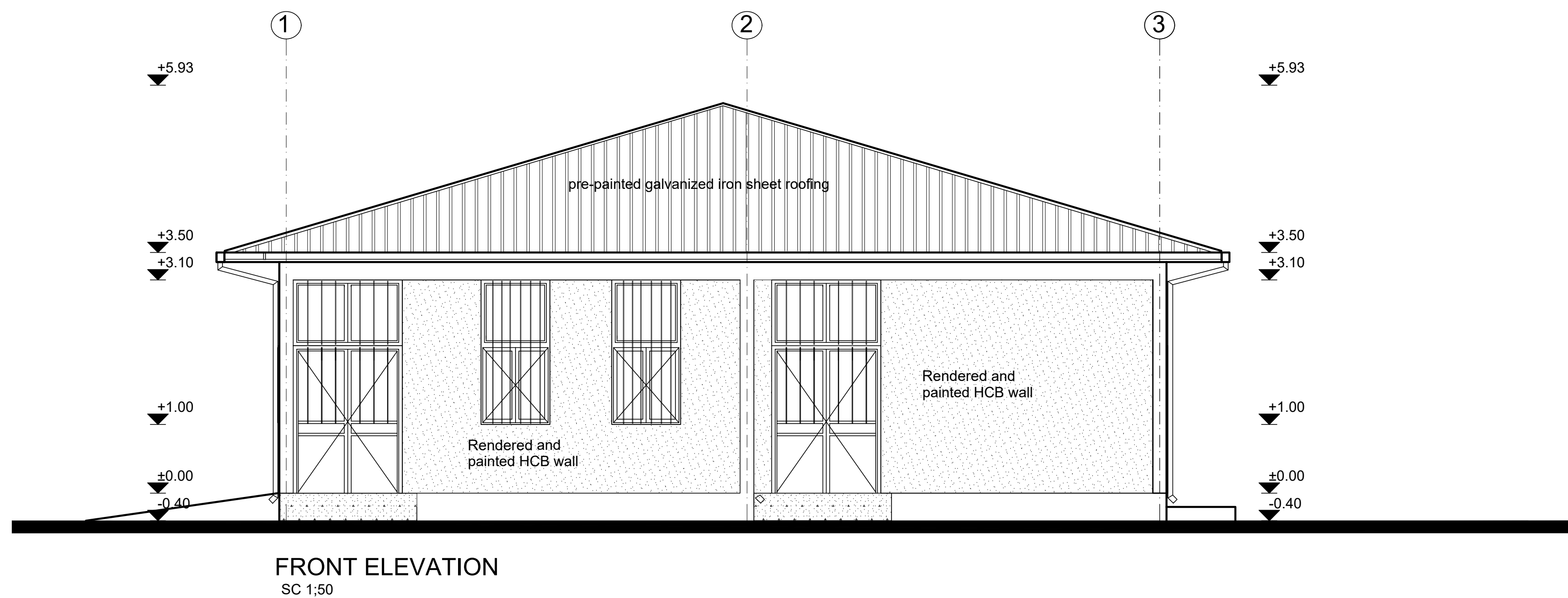
Designed by	Discipline:	Dr. No:	Tot. No:	Rev No:		
MM	AR	04	16	R0		
Drawn:	Checked:	Approved:	Size:	Scale:	Date:	Rev.:
MM	BM	SM	A1	1:50	02 / 05 /2021	0







SECTION A-A  
SC 1:50



FRONT ELEVATION  
SC 1:50

#### GENERAL NOTES:

##### Note:

- 1) Replace damaged roof sheets, 10% of the total area  
Fix loose connections and joints and paint to match.  
Ensure no water leakage via roofing system
- 2) Chipwood - damaged part to be replaced-  
55% of the total ceiling area  
loose connections and uneven surface to be fixed  
and entire ceiling surface to be painted:
- 3) Interior & Exterior Walls -  
Patch and repair defective plaster (15% of total surface)  
and entire wall surface to be repainted.
- 4) Floor Finish:  
Provide new non-slippery ceramic floor tiles

	/	/		
	/	/		
	/	/		
	/	/		
	/	/		
	/	/		
	/	/		
	/	/		
	/	/		
	/	/		
	/	/		
	/	/		
	/	/		
0	/	/		
Rev.:	Date:	Description:	Approved	

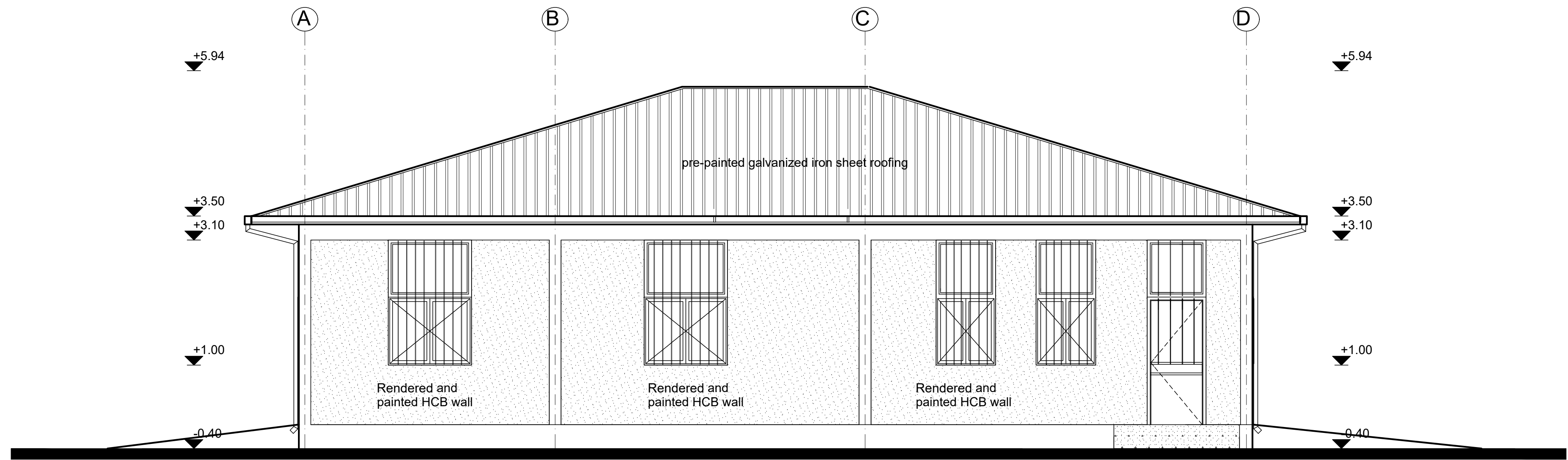
#### KEY PLAN

All information in this document is the property of UNOPS and cannot be copied anywhere but in this project without prior written consent of UNOPS.

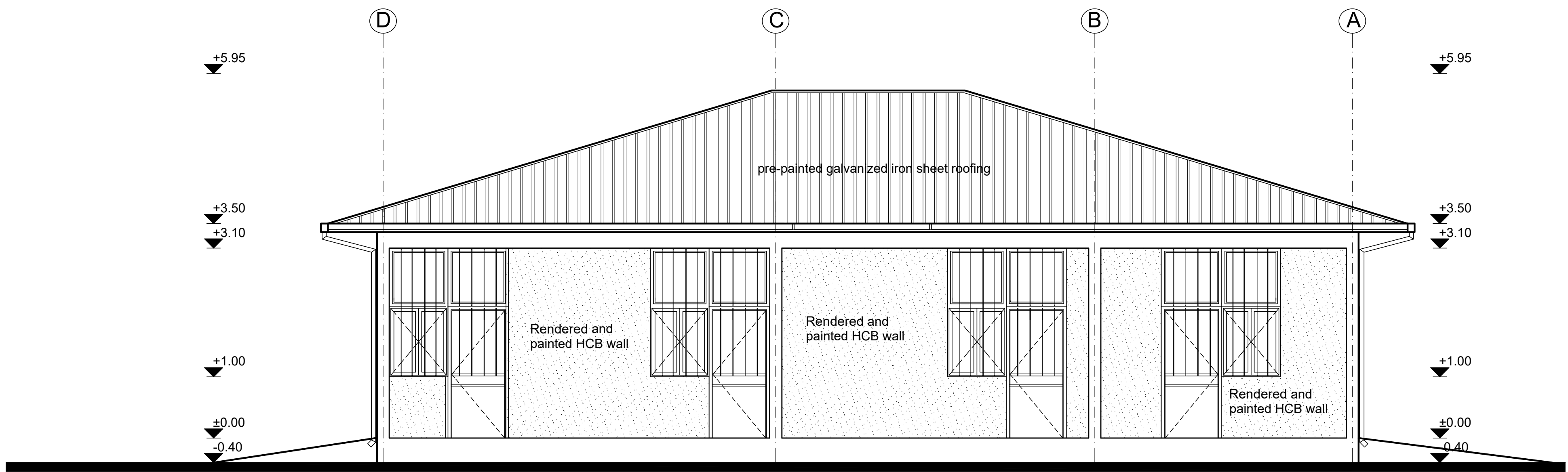
Funded By:		Partner:	
United Nations Higher Commission for Refugees Office for the AU ( UNHCR)		United Nations Higher Commission for Refugees Office for the AU ( UNHCR)	
Program:		Implemented By:	
Rehabilitation of UNHCR One-Stop-Shop (OSS) Registration Model		UNOPS ETHIOPIA OPERATIONAL HUB	
Project Name:		Design:	
BOKOLMANYO OSS CENTER		UNOPS ETHIOPIA OPERATIONAL HUB	

#### SECTION & ELEVATION - REGISTRATION MODEL

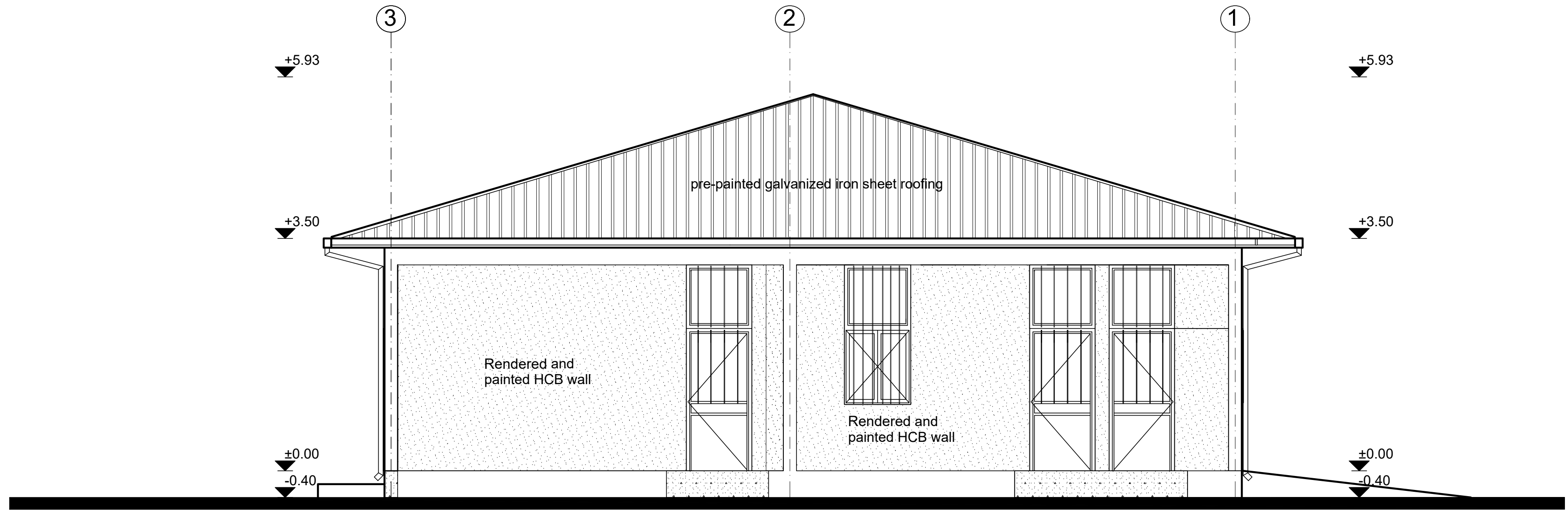
Designed by		Discipline:	Dr. No:	Tot. No:	Rev No:
MM		AR	07	16	R0
Drawn:	Checked:	Approved:	Size:	Scale:	Date:
MM	BM	SM	A1	1:50	02 / 05 / 2021
				Rev.:	
				0	



LEFT SIDE ELEVATION  
SC 1:50



RIGHT SIDE ELEVATION  
SC 1:50



REAR ELEVATION  
SC 1:50

GENERAL NOTES:

- Note:
- 1) Replace damaged roof sheets, 10% of the total area  
Fix loose connections and joints and paint to match.  
Ensure no water leakage via roofing system
  - 2) Chipwood - damaged part to be replaced-  
55% of the total ceiling area  
loose connections and uneven surface to be fixed  
and entire ceiling surface to be painted:
  - 3) Interior & Exterior Walls -  
Patch and repair defective plaster (15% of total surface)  
and entire wall surface to be repainted.
  - 4) Floor Finish:  
Provide new non-slippery ceramic floor tiles

	/	/		
	/	/		
	/	/		
	/	/		
	/	/		
	/	/		
	/	/		
	/	/		
	/	/		
	/	/		
0	/	/		
Rev.:	Date:	Description:	Approved	

KEY PLAN

All information in this document is the property of UNOPS and cannot be copied anywhere but in this project without prior written consent of UNOPS.

Funded By:		Partner:	
United Nations Higher Commission for Refugees Office for the AU ( UNHCR)		United Nations Higher Commission for Refugees Office for the AU ( UNHCR)	
Program:		Implemented By:	
Rehabilitation of UNHCR One-Stop-Shop (OSS) Registration Model		UNOPS ETHIOPIA OPERATIONAL HUB	
Project Name:		Design:	
BOKOLMANYO OSS CENTER		UNOPS ETHIOPIA OPERATIONAL HUB	

Drawing Title:

ELEVATION- REGISTRATION MODEL

Designed by			Discipline:	Dr. No:	Tot. No:	Rev No:
MM			AR	08	16	R0
Drawn:	Checked:	Approved:	Size:	Scale:	Date:	Rev.:
MM	BM	SM	A1	1:50	02 / 05 /2021	0



PARTITION SCHEDULE

Window Name	P1	P2	P3	P4
Quantity	1	3	1	8
Type				
Frame material	Aluminium frame extruded profiles of standard UNI 3870 - ICS 77.140.90	Aluminium frame extruded profiles of standard UNI 3870 - ICS 77.140.90	Aluminium frame extruded profiles of standard UNI 3870 - ICS 77.140.90	Wooden frame with wooden mouldings all round
Frame finish	Brushed natural Aluminium Surface	Brushed natural Aluminium Surface	Brushed natural Aluminium Surface	Plastic emulsion paint.
Glazing	5mm thick clear glass	5mm thick clear glass	5mm thick clear glass	Solid, 40mm oke veneered plywood
Front View				

GENERAL NOTES:

Notes:

1)New Metal Partition Schedule

	/	/		
	/	/		
	/	/		
	/	/		
	/	/		
	/	/		
	/	/		
	/	/		
	/	/		
	/	/		
	/	/		
	/	/		
0	/	/		
Rev.:	Date:	Description:		Approved

KEY PLAN

All information in this document is the property of UNOPS and cannot be copied anywhere but in this project without prior written consent of UNOPS.

Funded By:	Partner:
United Nations Higher Commission for Refugees Office for the AU ( UNHCR)	United Nations Higher Commission for Refugees Office for the AU ( UNHCR)
Program:	Implemented By:
Rehabilitation of UNHCR One-Stop-Shop (OSS) Registration Model	UNOPS ETHIOPIA OPERATIONAL HUB
Project Name:	Design:
BOKOLMANYO OSS CENTER	UNOPS ETHIOPIA OPERATIONAL HUB
Drawing Title:	

METAL PARTITION DETAILS - REGISTRATION MODEL

Designed by		Discipline:	Dr. No:	Tot. No:	Rev No:
MM		AR	09	16	R0
Drawn:	Checked:	Approved:	Size:	Scale:	Date:
MM	BM	SM	A1	1:50	02 / 05 /2021
					0



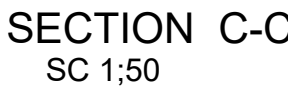
Note:

- 1) Interior & Exterior Walls - Patch and repair defective plaster and repaint.
- 2) Floor & Wall Finish: Replace damaged floor and wall ceramic tiles and harmonize with existing finish.

	/	/		
	/	/		
	/	/		
	/	/		
	/	/		
	/	/		
	/	/		
	/	/		
	/	/		
	/	/		
	/	/		
	/	/		
0	/	/		
Rev.:	Date:	Description:		Approved

KEY PLAN	
<p>* Information in this document is the property of UNOPS and cannot be copied anywhere but in this project without prior written consent of UNOPS.</p>	
Funded By:	Partner:
United Nations Higher Commission for Refugees Office for the AU ( UNHCR)	United Nations Higher Commission for Refugees Office for the AU ( UNHCR)
Program:	Implemented by:
Rehabilitation of UNHCR One-Stop-Shop (OSS) Registration Model	UNOPS ETHIOPIA OPERATIONAL HUB
Project Name:	Design:
BOKOLMANYO OSS CENTER	UNOPS ETHIOPIA OPERATIONAL HUB

Designed by				Discipline:	Dr. No:	Tot. No:	Rev No:		
MM				AR	10	16	R0		
Drawn:	Checked:	Approved:	Size:	Scale:	Date:	Rev.:			
MM	BM	SM	A1	1:50	02 / 05 / 2021	0			



GENERAL NOTES:

Note:

- 1) Interior & Exterior Walls - Patch and repair defective plaster and repaint.
- 2) Floor & Wall Finish: Replace damaged floor and wall ceramic tiles and harmonize with existing finish.

	/	/		
	/	/		
	/	/		
	/	/		
	/	/		
	/	/		
	/	/		
	/	/		
	/	/		
	/	/		
	/	/		
	/	/		
0	/	/		
Rev.:	Date:	Description:	Approved	

## KEY PLAN

All information in this document is the property of UNOPS and cannot be copied anywhere but in this project without prior written consent of UNOPS.

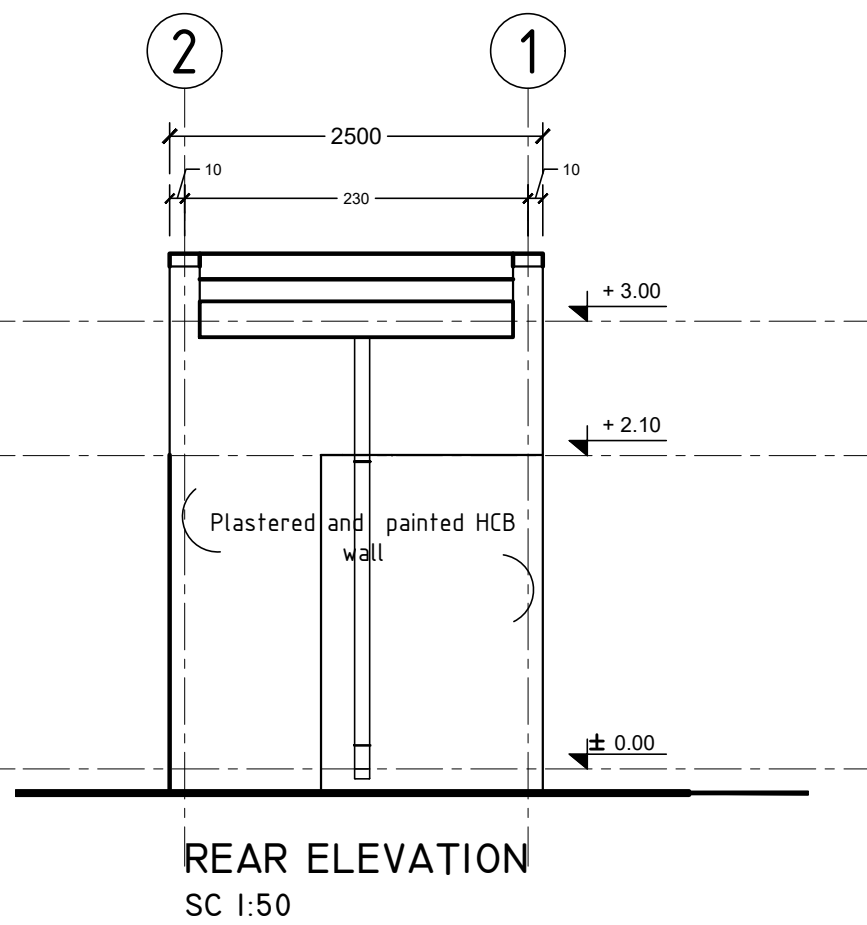
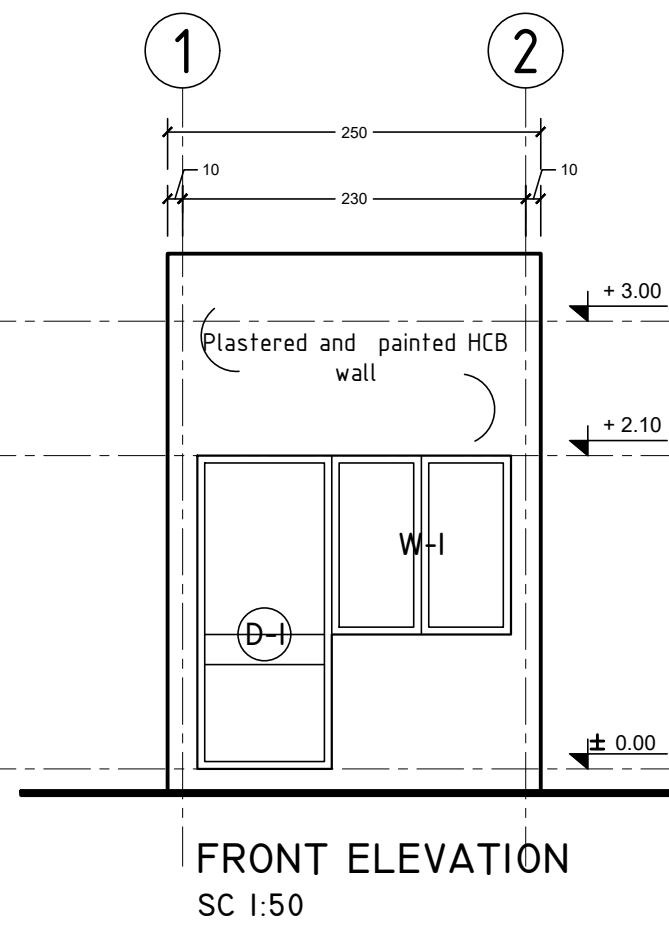
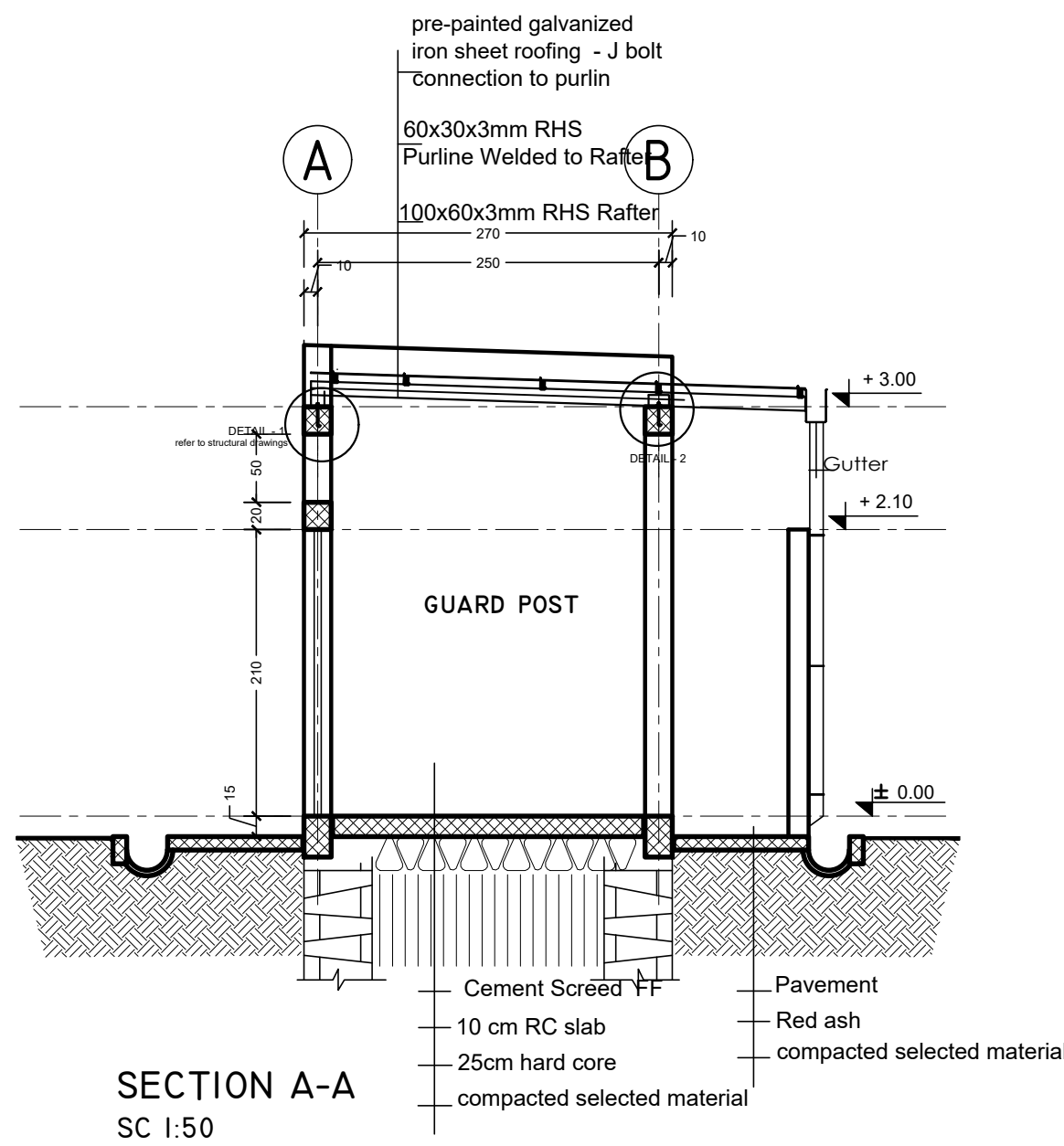
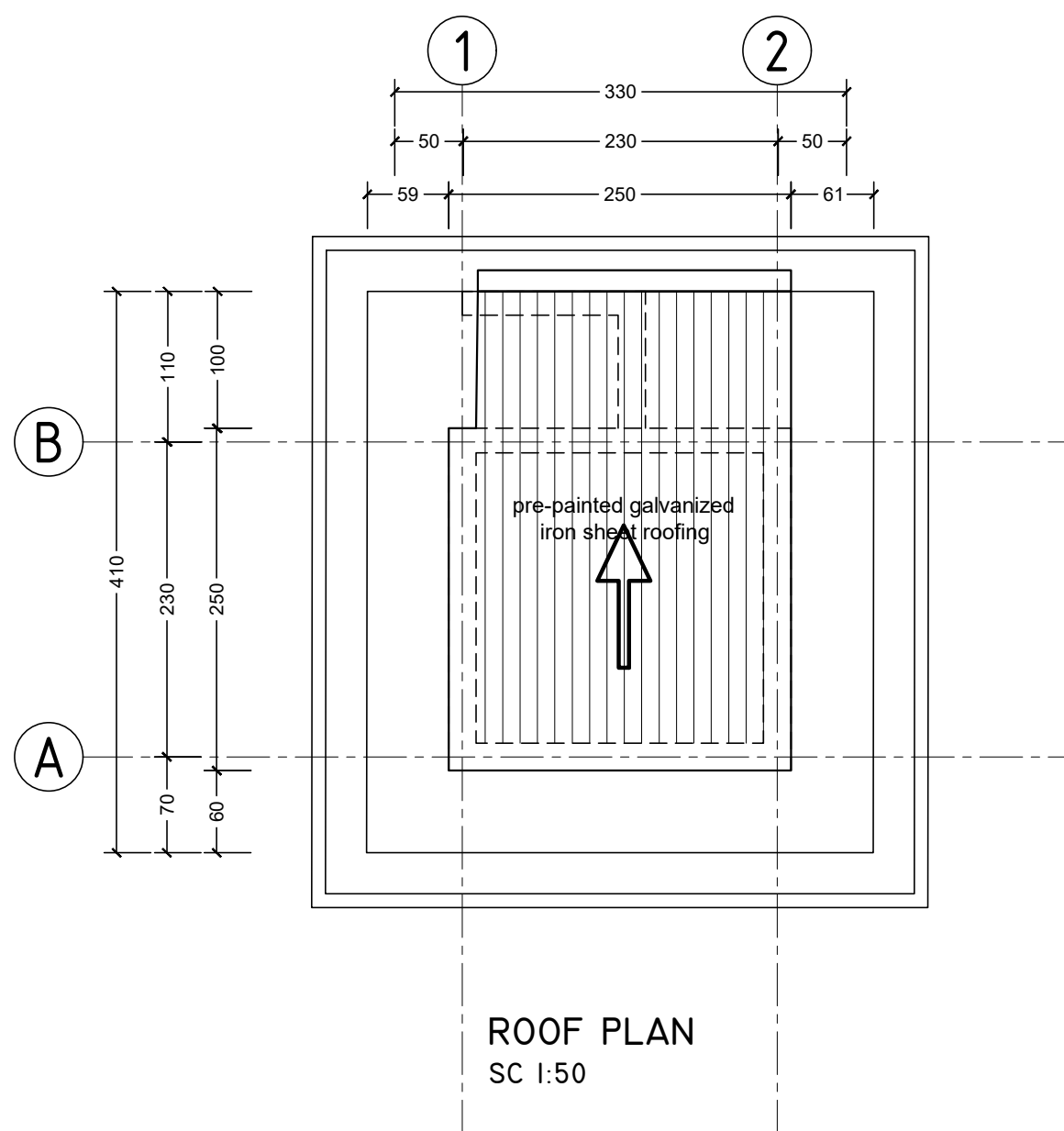
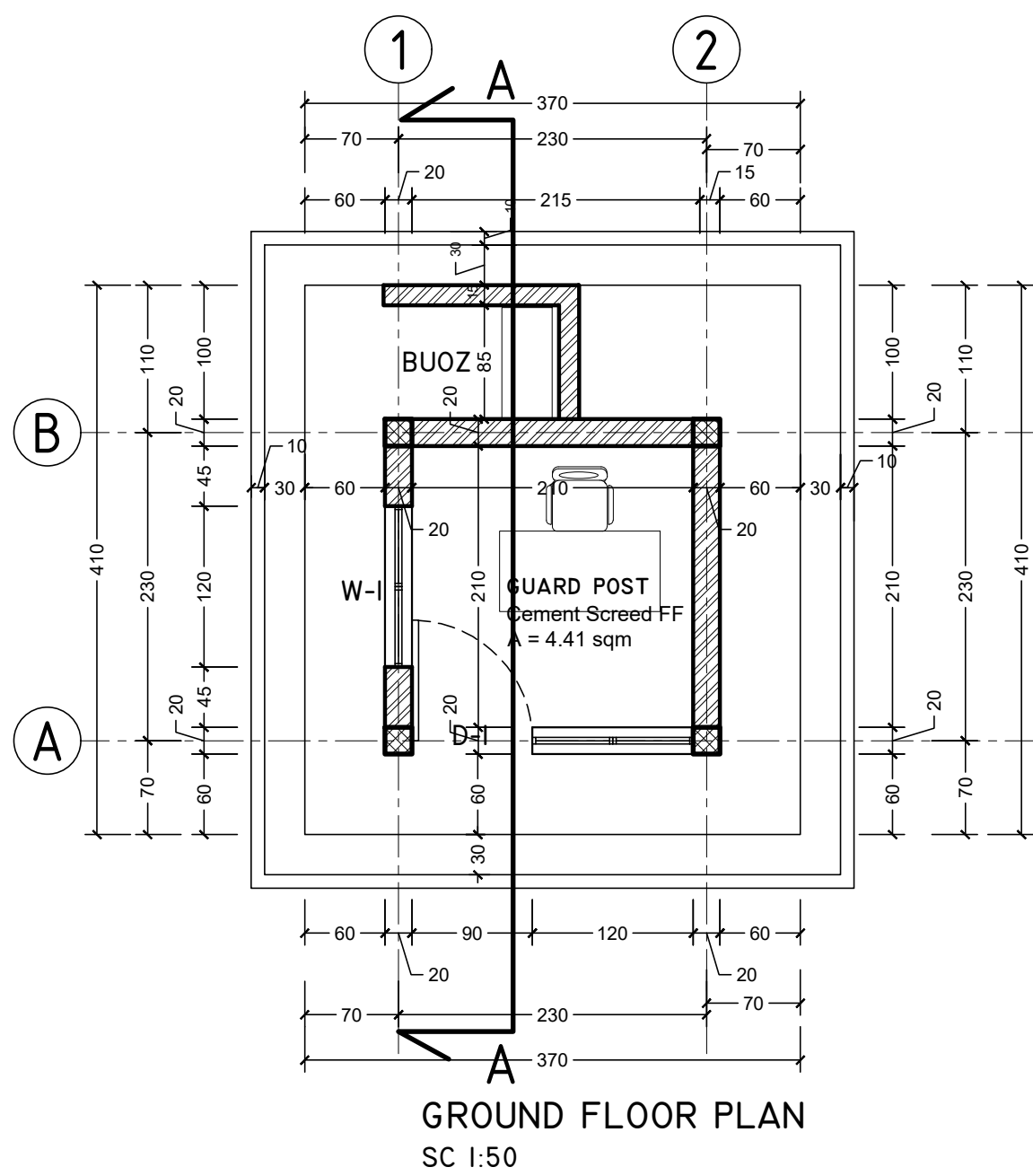
Funded By:	Partner:
United Nations Higher Commission for Refugees Office for the AU ( UNHCR)	United Nations Higher Commission for Refugees Office for the AU ( UNHCR)
Program:	Implemented By:
Rehabilitation of UNHCR One-Stop-Shop (OSS) Registration Model	UNOPS ETHIOPIA OPERATIONAL HUB
Project Name:	Design:
BOKOLMANYO OSS CENTER	UNOPS ETHIOPIA OPERATIONAL HUB

Drawing Title

## STAFF TOILET PLANS

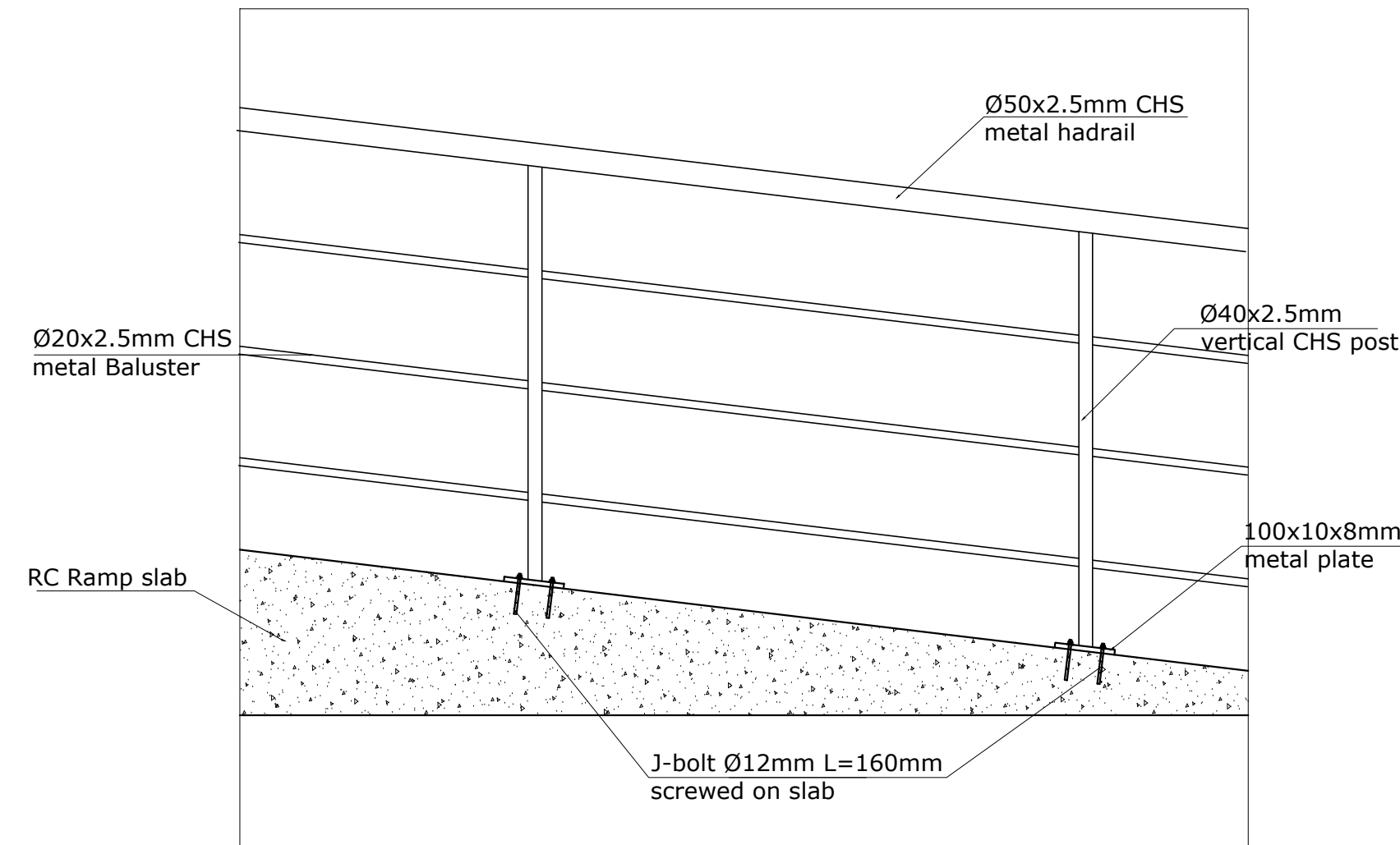
Designed by			Discipline:	Dr. No:	Tot. No:	Rev. No:		
MM			AR	11	16	R0		
Drawn:	Checked:	Approved:	Size:	Scale:	Date:	Rev.:		
MM	BM	SM	A1	1:50	02 / 05 / 2021	0		





WINDOWS AND DOOR SCHEDULE  
SC 1:50

	D-I	W-I
PLAN VIEW		
ELEVATION VIEW		
PIECES	1 pcs	2 pcs
OPENING DIRECTION	LEFT - Inward 1, Outward 0 RIGHT - Inward 0, Outward 0	double pane inward opening
DESCRIPTION	2.5mm thick metal LTZ profile frame with corrugated metal sheet bottom panel	2.5mm thick metal LTZ profile frame.
GLAZING	4mm thick translucent and non reflective glass	4mm thick clear and non reflective glass



TYPICAL RAMP HANDRAIL DETAIL  
Scale 1:20


FINISHING SCHEDULE  
SC 1:50

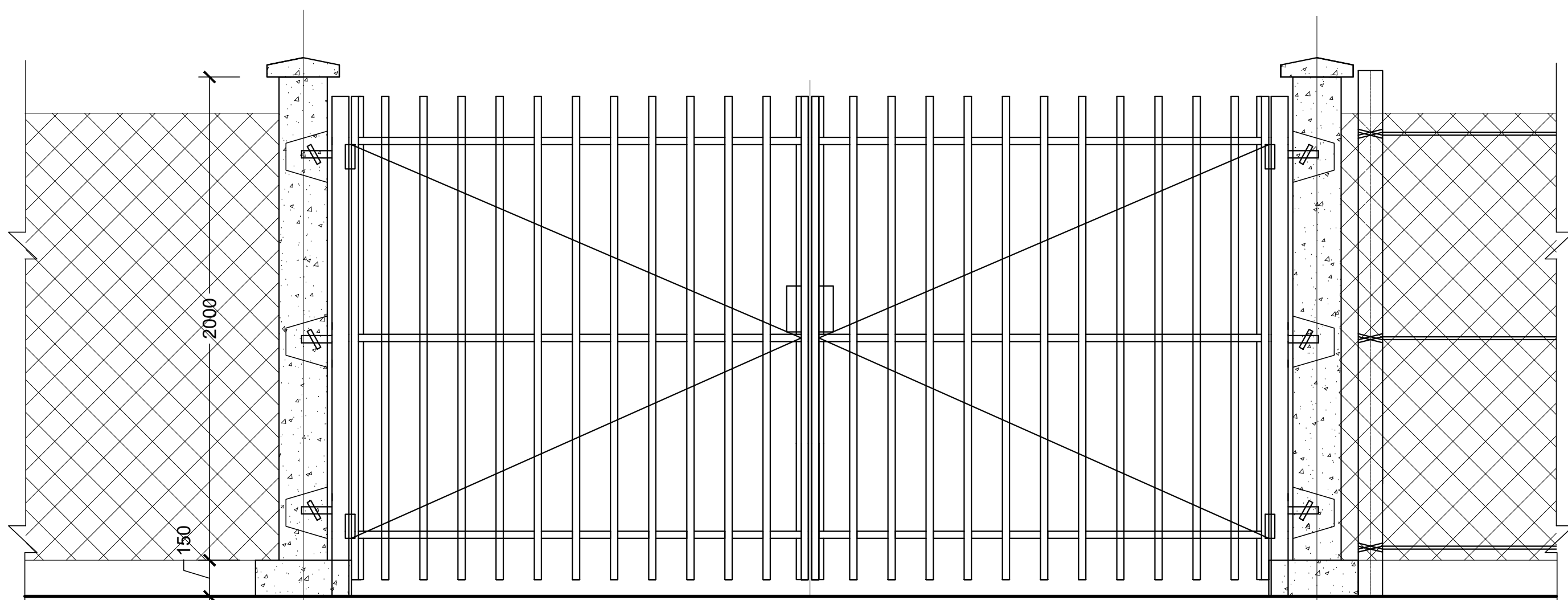
ROOM	AREA	FLOOR FINISH	WALL FINISH	CEILING FINISH
GUARD POST	4.41 sqm	50mm thick cement screed	plastered and painted HCB wall	Open ceiling to roof structure

GENERAL NOTES:

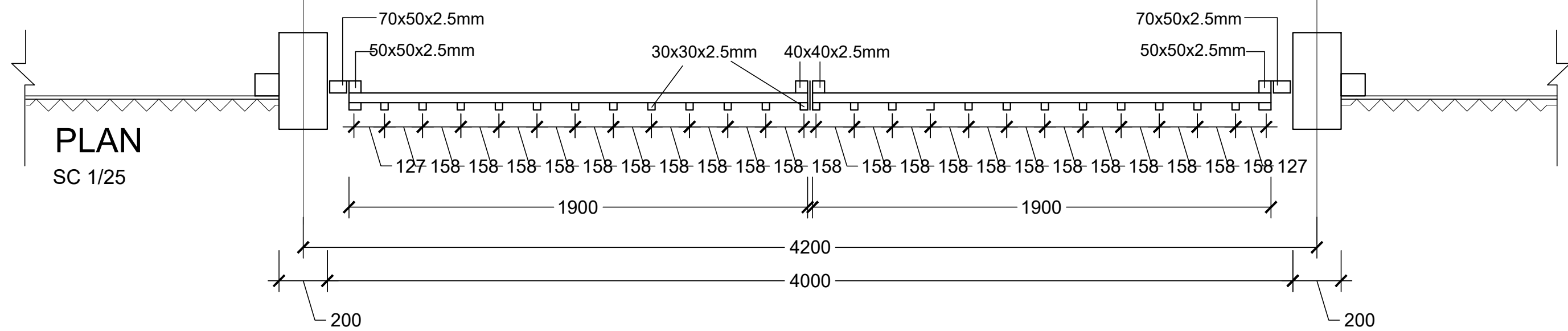
Rev.:	Date:	Description:	Approved
1			
2			
3			
4			
5			
6			
7			
8			
9			
10			
11			
12			
13			
14			
15			
16			
17			
18			
19			
20			
21			
22			
23			
24			
25			
26			
27			
28			
29			
30			
31			
32			
33			
34			
35			
36			
37			
38			
39			
40			
41			
42			
43			
44			
45			
46			
47			
48			
49			
50			
51			
52			
53			
54			
55			
56			
57			
58			
59			
60			
61			
62			
63			
64			
65			
66			
67			
68			
69			
70			
71			
72			
73			
74			
75			
76			
77			
78			
79			
80			
81			
82			
83			
84			
85			
86			
87			
88			
89			
90			
91			
92			
93			
94			
95			
96			
97			
98			
99			
100			

KEY PLAN

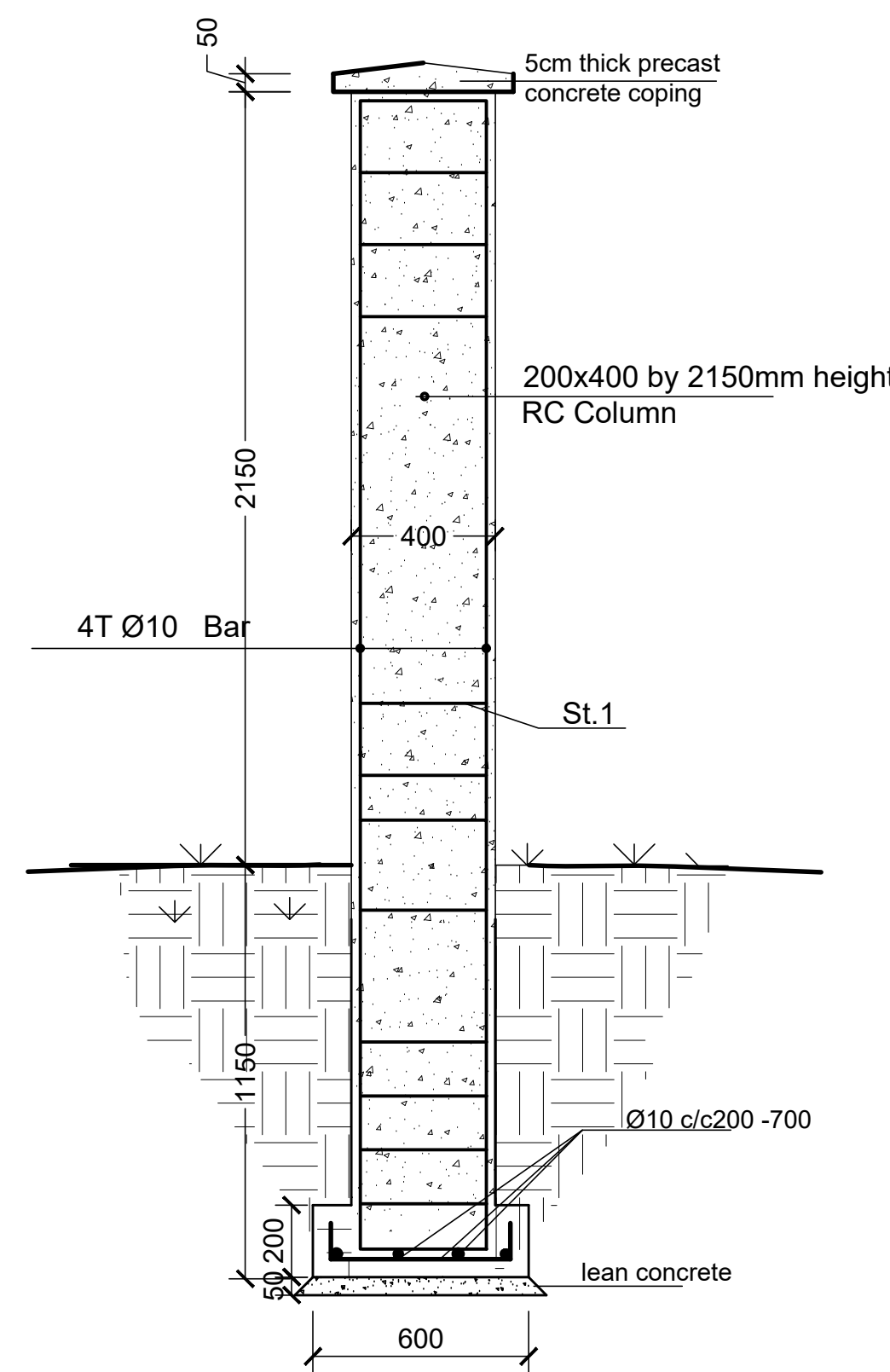
All information in this document is the property of UNOPS and cannot be copied anywhere but in this project without prior written consent of UNOPS.	
Funded By:	Partner:
United Nations Higher Commission for Refugees Office for the AU ( UNHCR)	United Nations Higher Commission for Refugees Office for the AU ( UNHCR)
Program:	Implemented By:
Rehabilitation of UNHCR One-Stop-Shop (OSS) REGISTRATION MODEL	UNOPS ,ETHIOPIA OPERATIONAL HUB
Project Name:	Design:
BOKOLMANYO OSS CENTER	UNOPS ,ETHIOPIA OPERATIONAL HUB
<div>UNOPS</div>	



ENTRANCE GATE ELEVATION  
SC 1/25

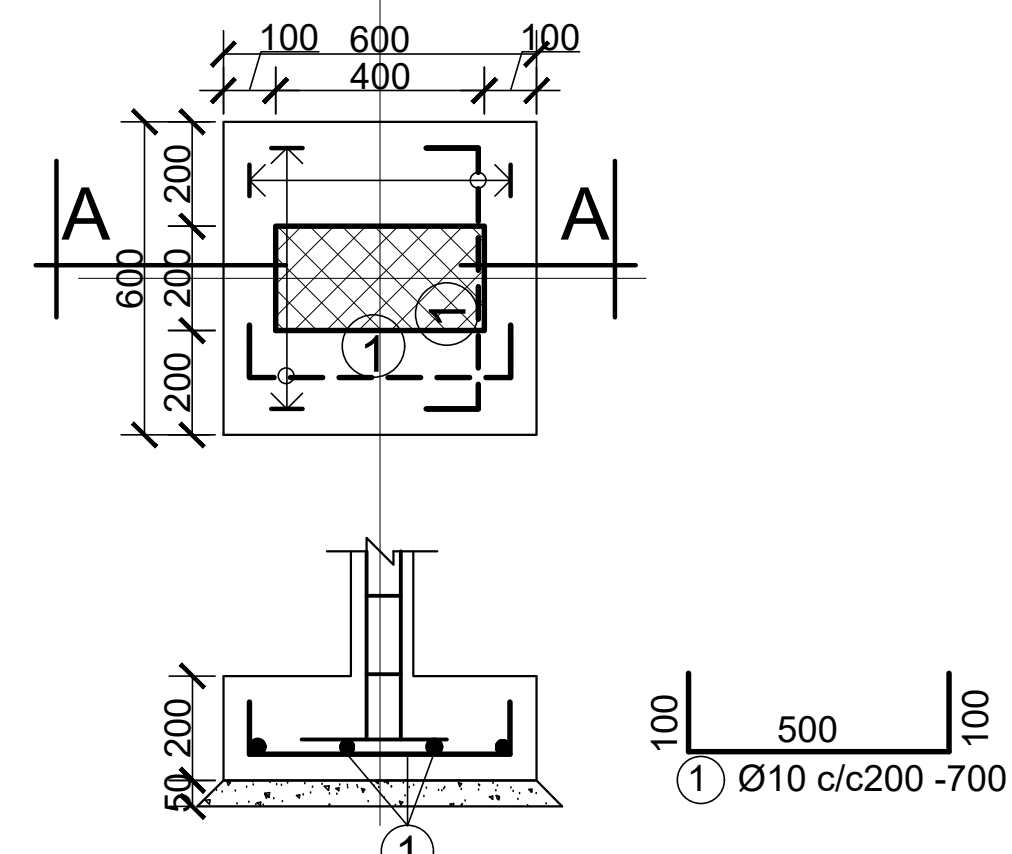


PLAN  
SC 1/25

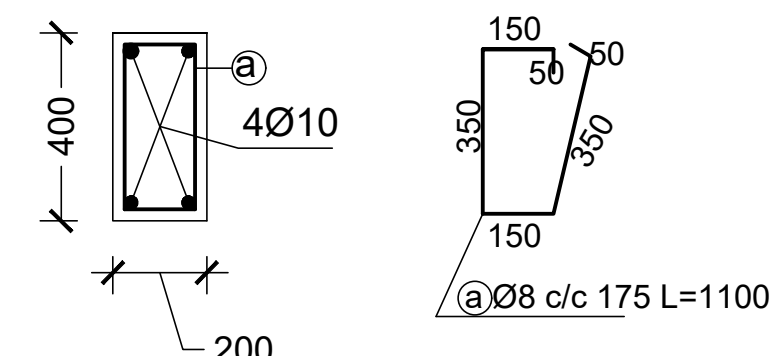


GATE COLUMN DETAIL  
SC 1/25

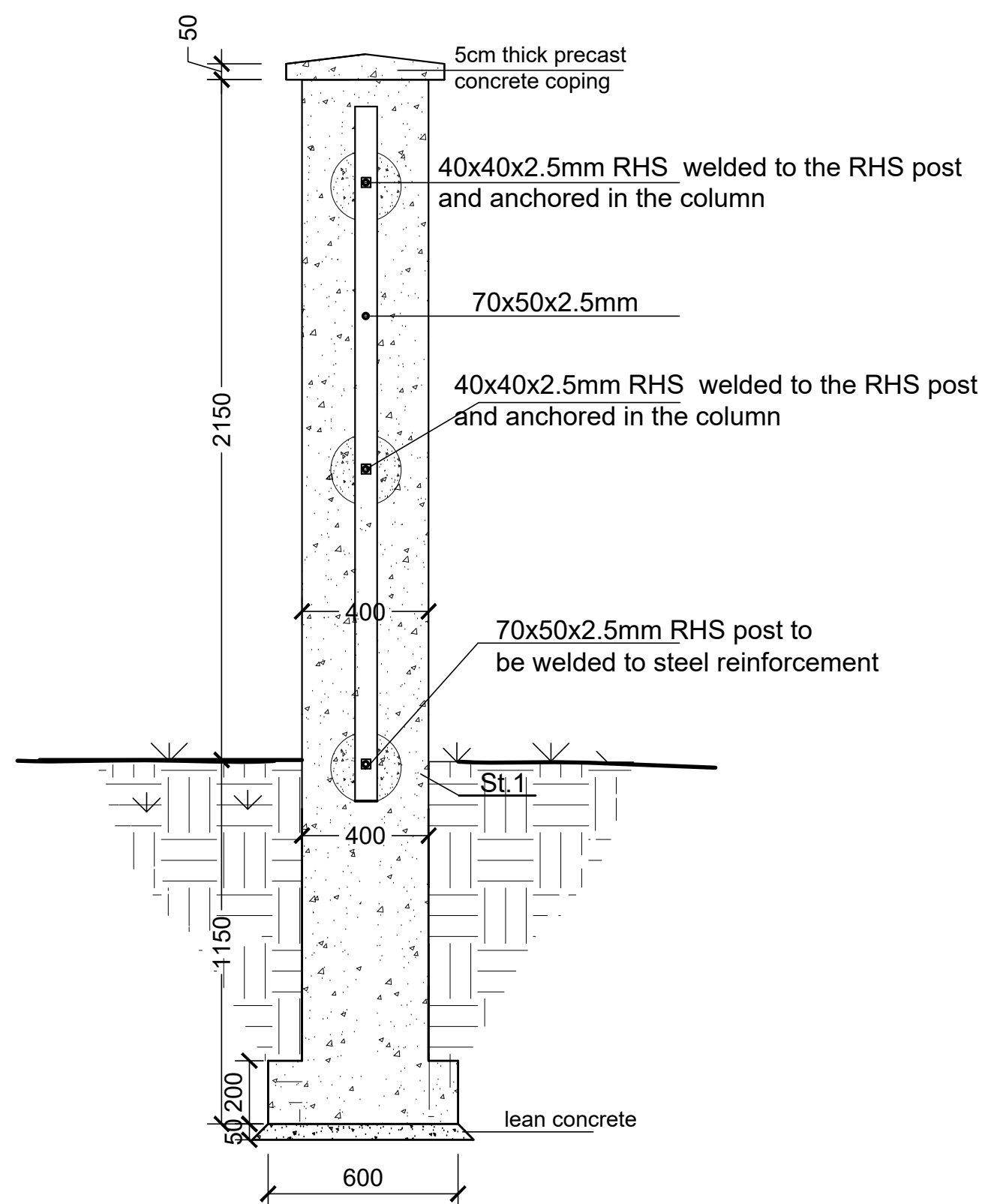
## FOUNDATION DETAIL



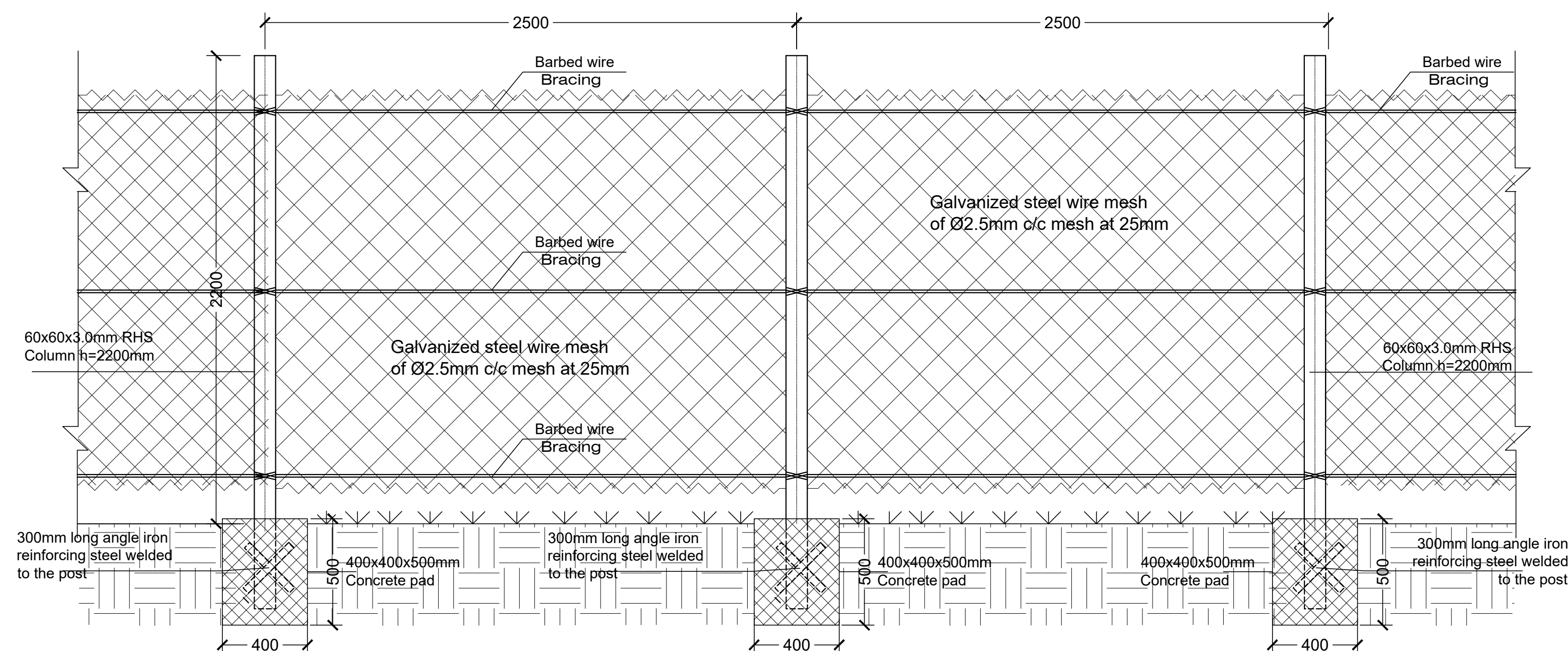
SECTION A-A  
Scale 1:25



TYPICAL COLUMN SECTION  
SCALE 1:25



GATE POST DETAIL  
SC 1/25



FENCE PARTIAL ELEVATION  
SC 1/25

## GENERAL NOTES:

Note:  
New Gate  
New Fence

Rev.	Date:	Description:	Approved
0	/ /		

## KEY PLAN

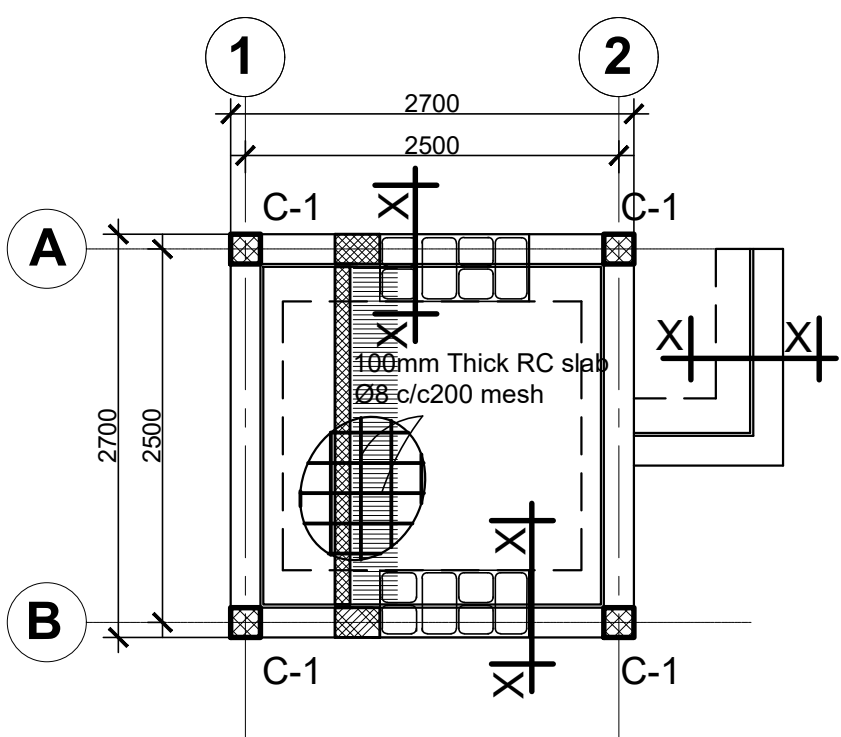
Funded By:		Partner:	
United Nations Higher Commission for Refugees Office for the AU ( UNHCR)		United Nations Higher Commission for Refugees Office for the AU ( UNHCR)	
Program:		Implemented By:	
Rehabilitation of UNHCR One-Stop-Shop (OSS) Registration Model		UNOPS , ETHIOPIA OPERATIONAL HUB	
Project Name:		Design:	
BOKOLMANYO OSS CENTER		UNOPS , ETHIOPIA OPERATIONAL HUB	

Drawing Title:

## GATE & FENCE DETAILS

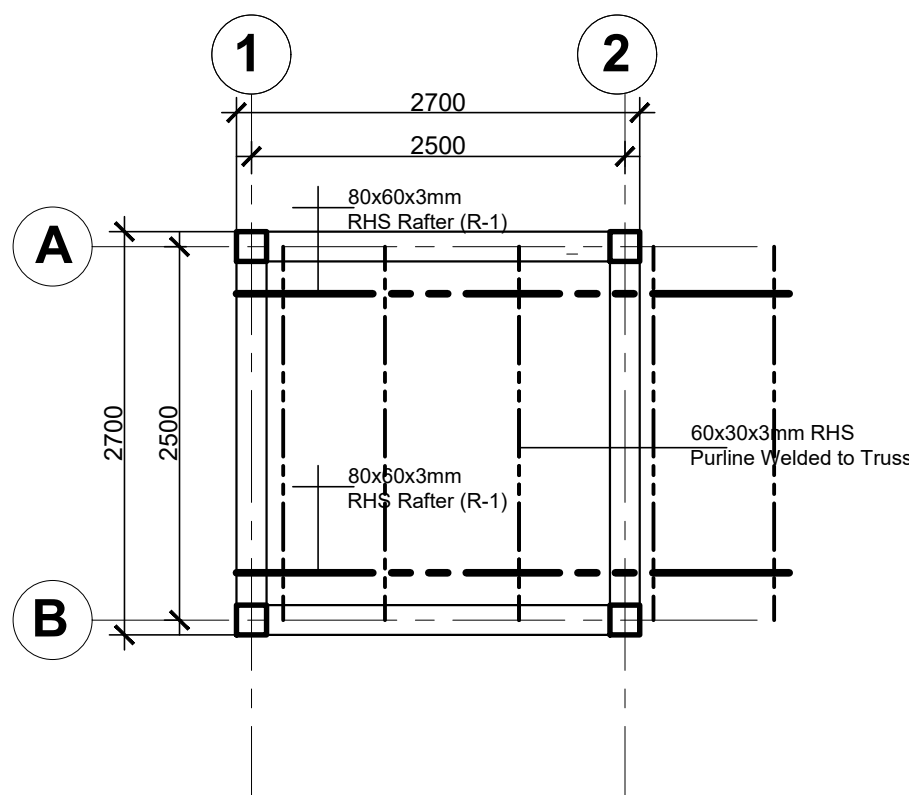
Designed by	Discipline:	Dr. No:	Tot. No:	Rev No:
MM	AR	13	16	R0
Drawn:	Checked:	Approved:	Size:	Scale:
MM	BM	SM	A1	1:50
				Date:
				02 / 05 / 2021
				Rev.:
				0





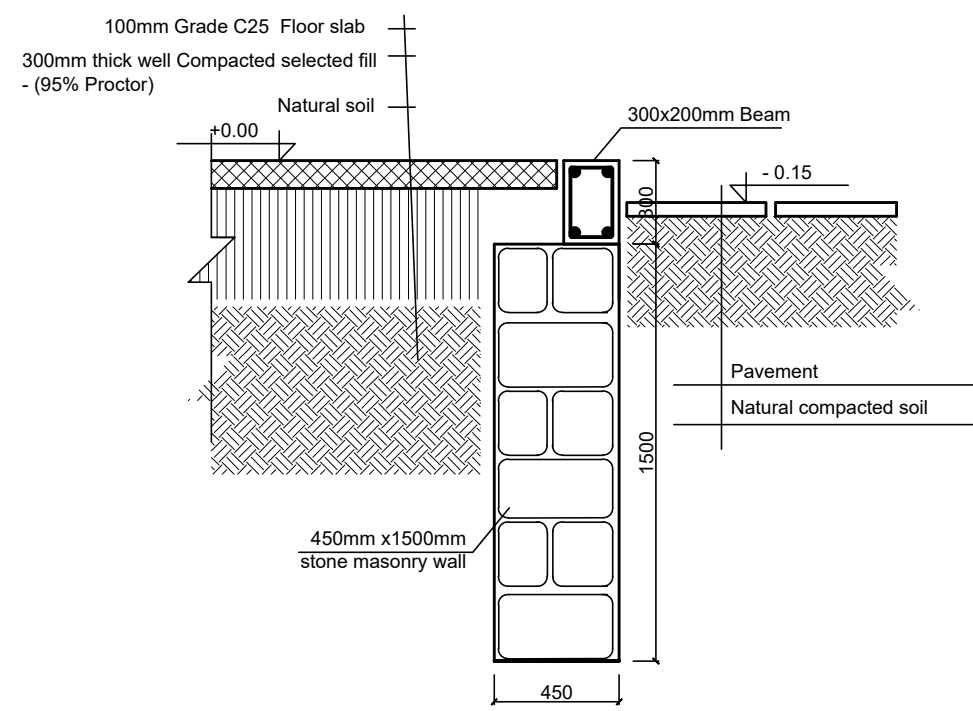
GROUND FLOOR SLAB REINFORCEMENT ,  
BEAM AND COLUMN LAYOUT  
(slab thickness =100mm )

SCALE 1:50



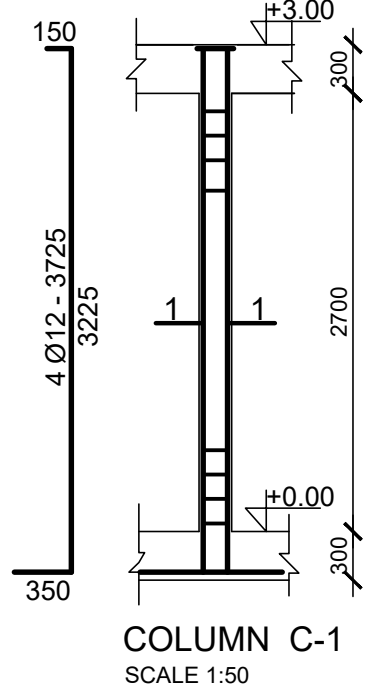
ROOF BEAM AND TRUSS LAYOUT

SCALE 1:50



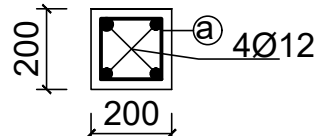
TYPICAL MASONRY WALL SECTION X-X

SCALE 1:25



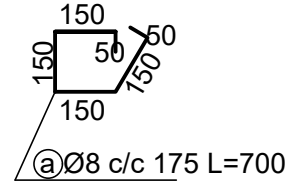
COLUMN C-1

SCALE 1:50

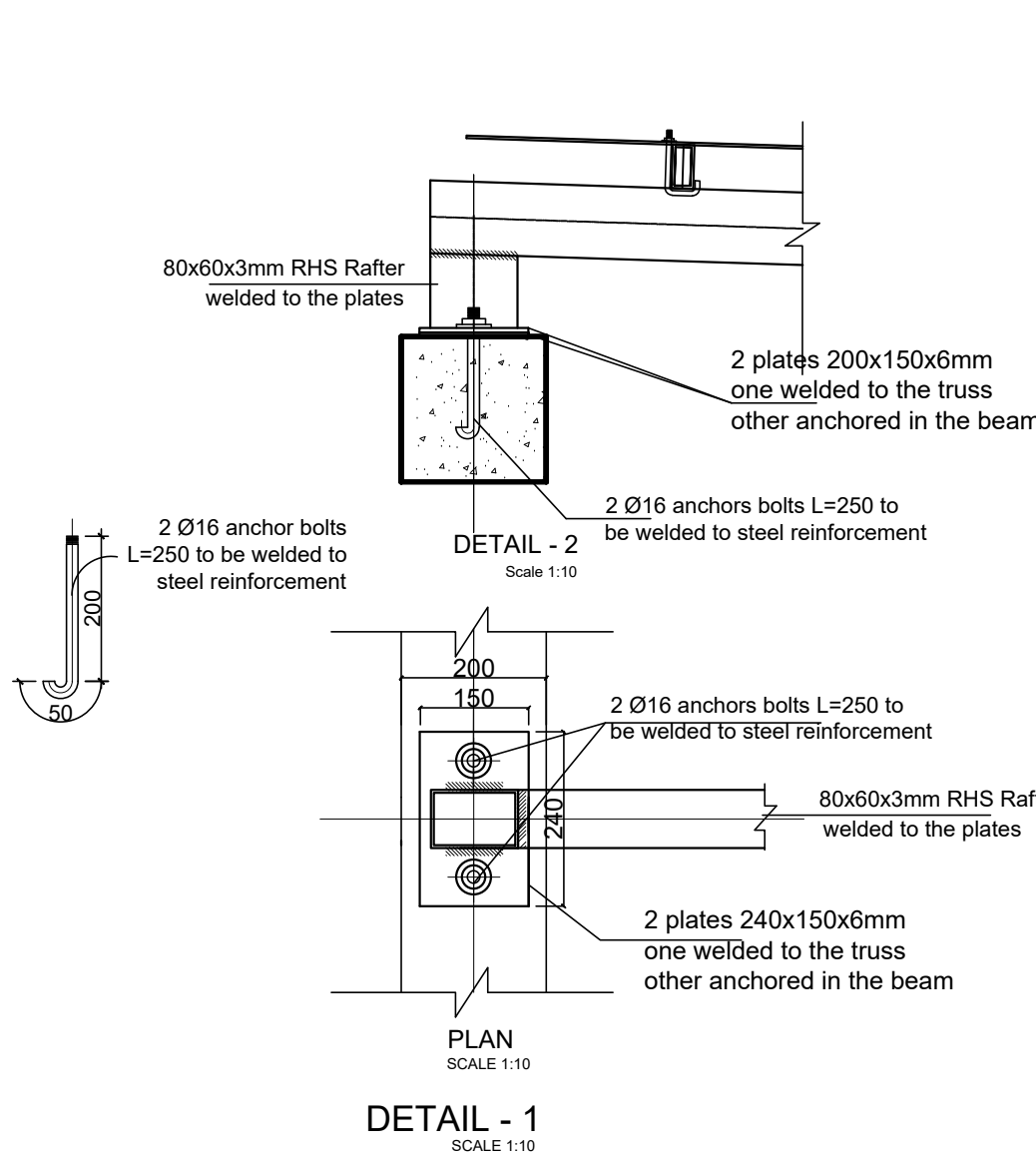


SECTION 1-1

SCALE 1:25

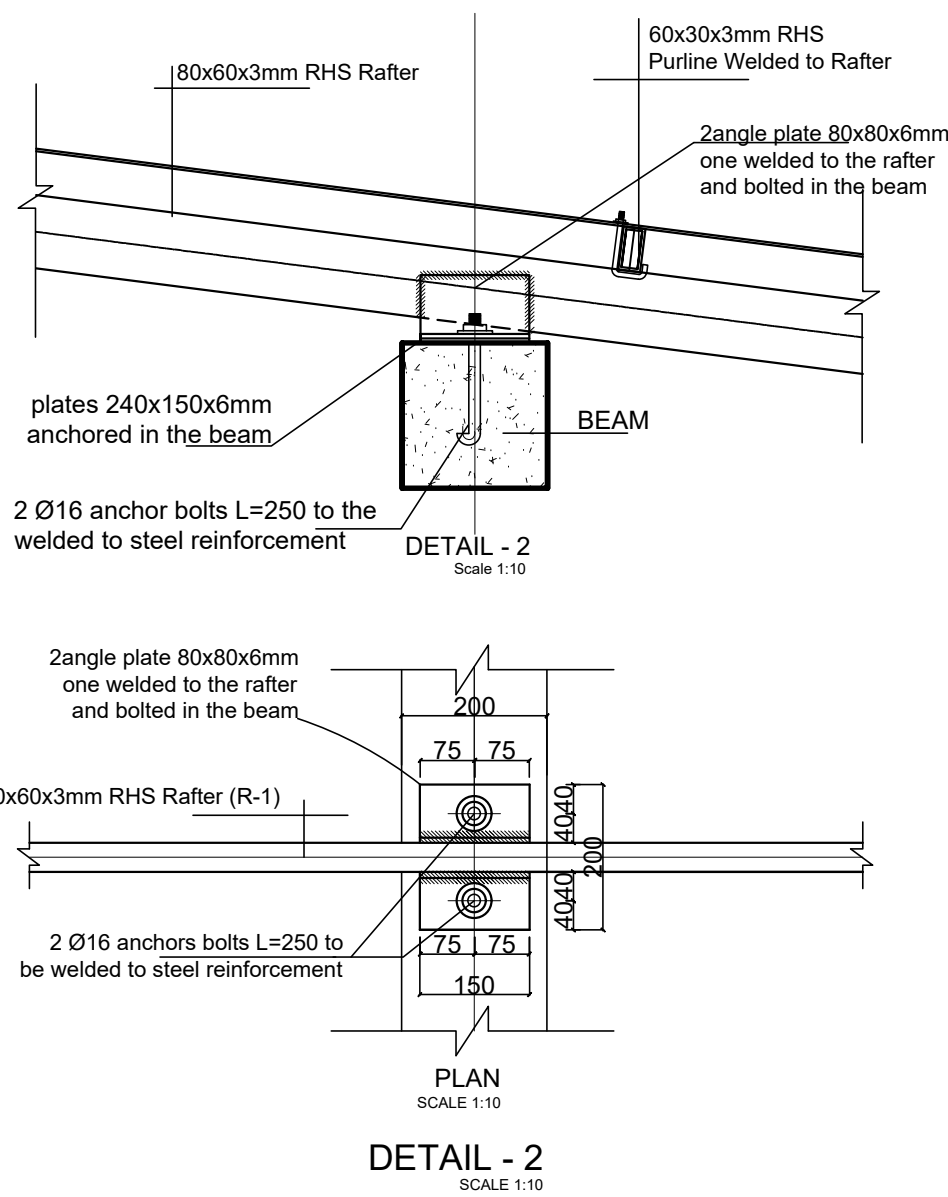


@ Ø8 c/c 175 L=700



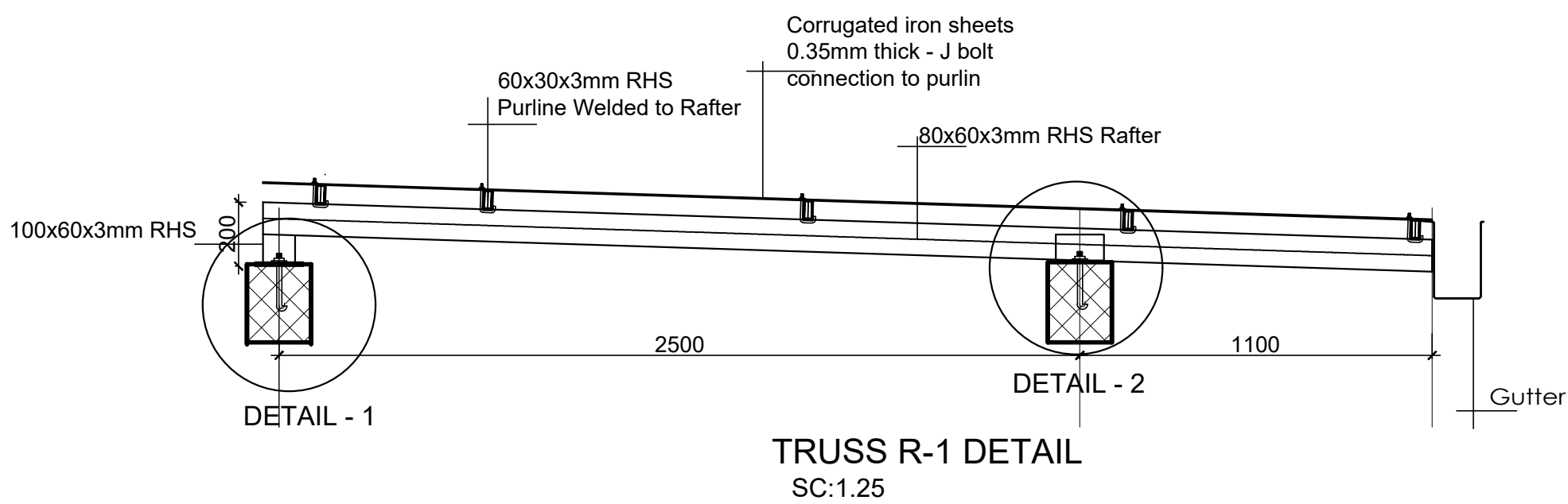
DETAIL - 1

SCALE 1:10



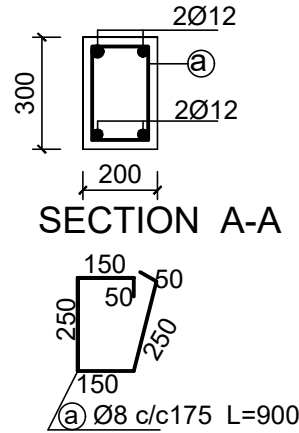
DETAIL - 2

SCALE 1:10



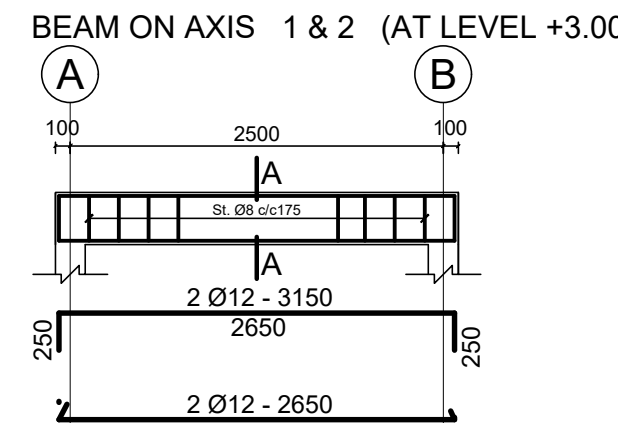
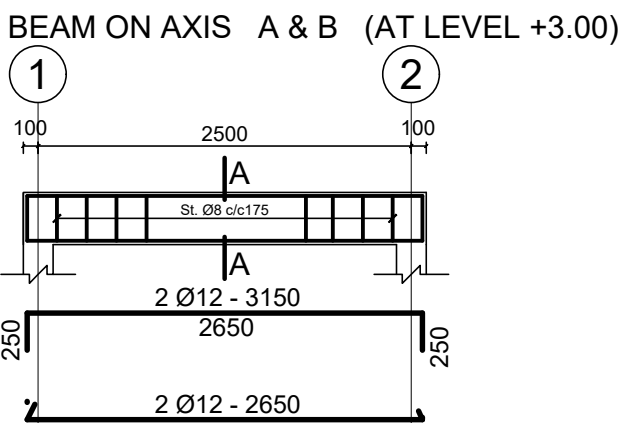
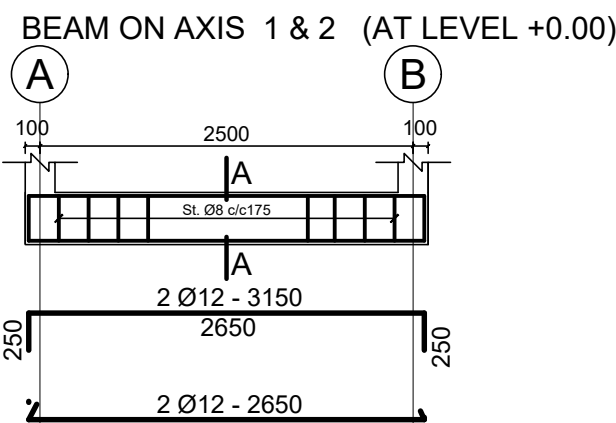
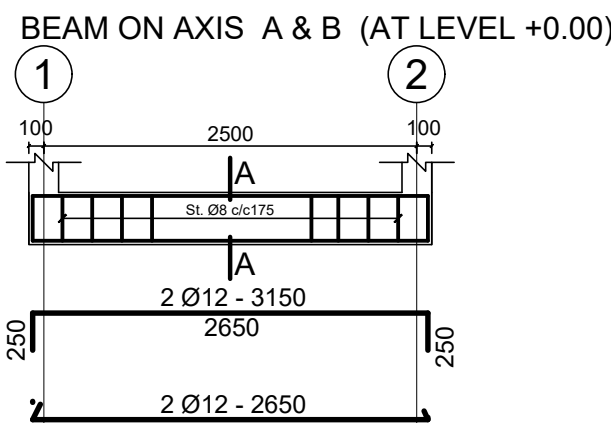
TRUSS R-1 DETAIL

SC:1.25



SECTION A-A

@ Ø8 c/c175 L=900



GENERAL NOTES:

KEY PLAN

All information in this document is the property of UNOPS and cannot be copied anywhere but in this project without prior written consent of UNOPS.

Funded By:	Partner:
United Nations Higher Commission for Refugees Office for the AU ( UNHCR)	United Nations Higher Commission for Refugees Office for the AU ( UNHCR)

Program:	Implemented By:
Rehabilitation of UNHCR One-Stop-Shop (OSS) REGISTRATION MODEL	UNOPS , ETHIOPIA OPERATIONAL HUB

Project Name:	Design:
BOKOLMANYO OSS CENTER	UNOPS , ETHIOPIA OPERATIONAL HUB

Drawing Title:

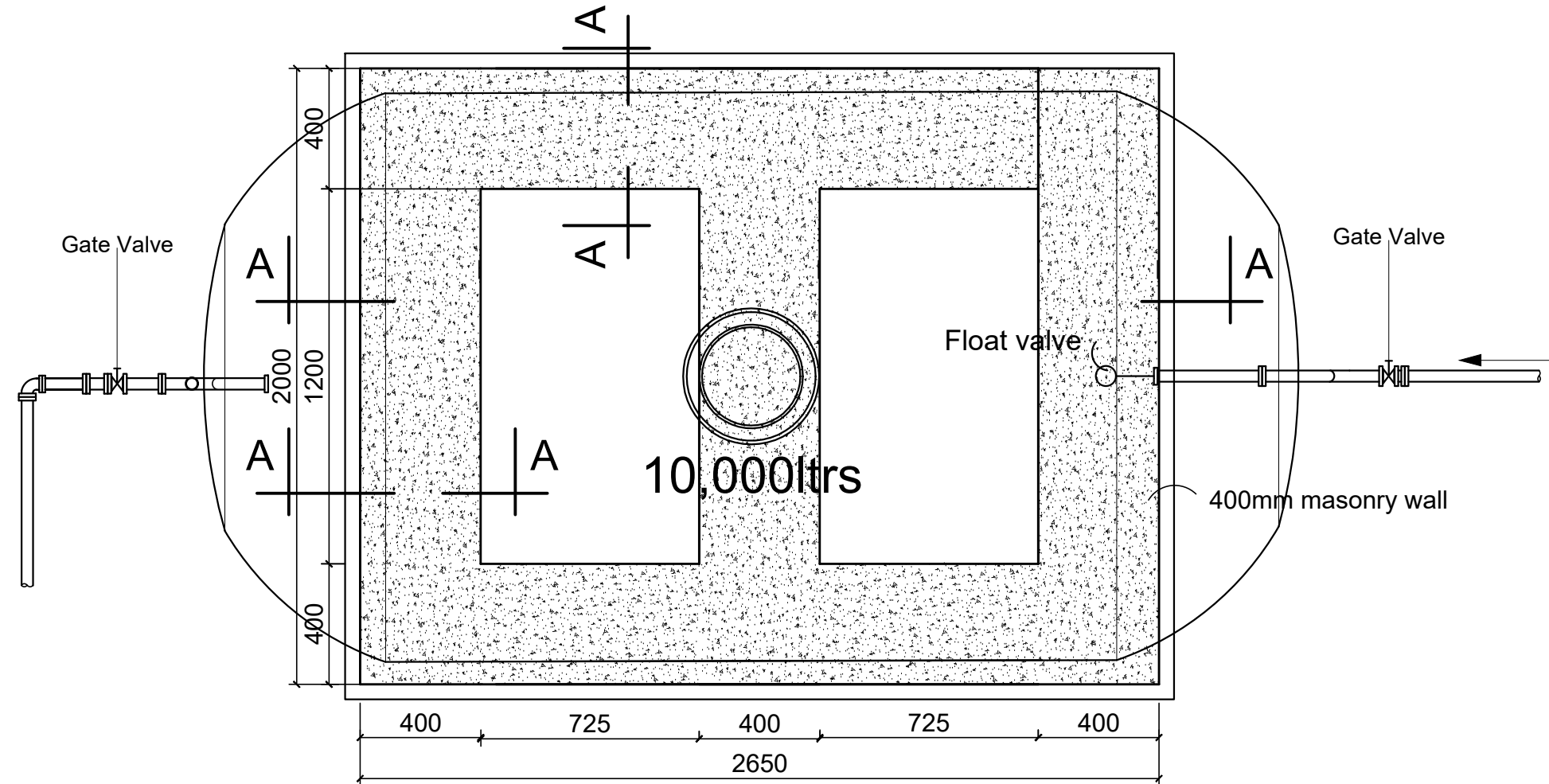
GUARD POST DETAILS

Designed by	Discipline:	Dr. No:	Tot. No:	Rev No:
MM	ST	14	16	R0
Drawn:	Checked:	Approved:	Size:	Scale:
MM	BM	SM	A1	1:50 , 1:25
Date:	Rev.:			
02/ 05 / 2021	0			



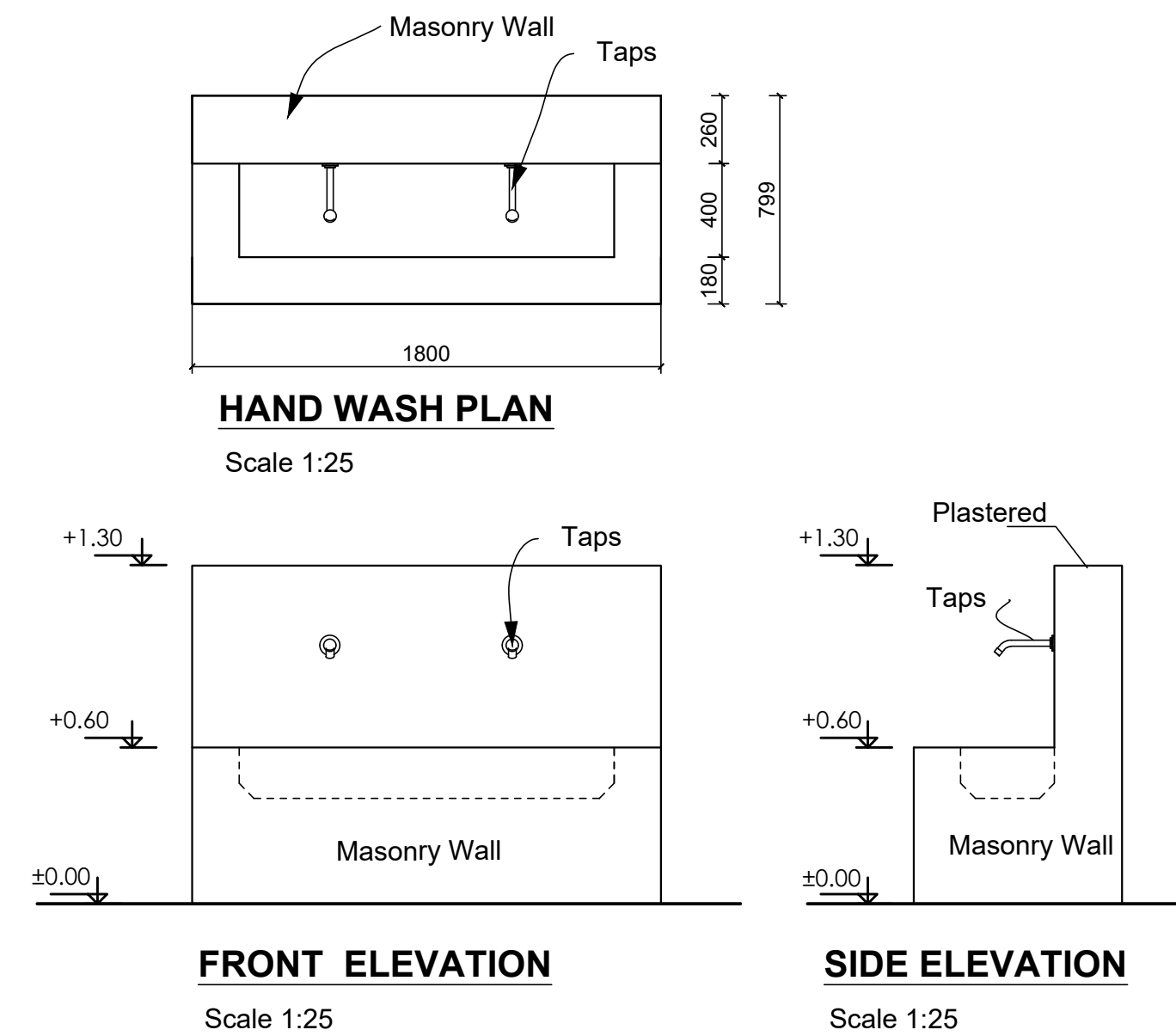
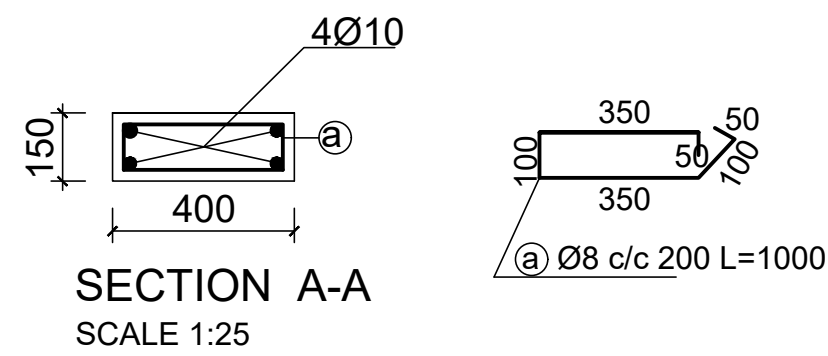
[illegible]

TYPICAL MASONRY WALL PLINTH FOR WATER TANK

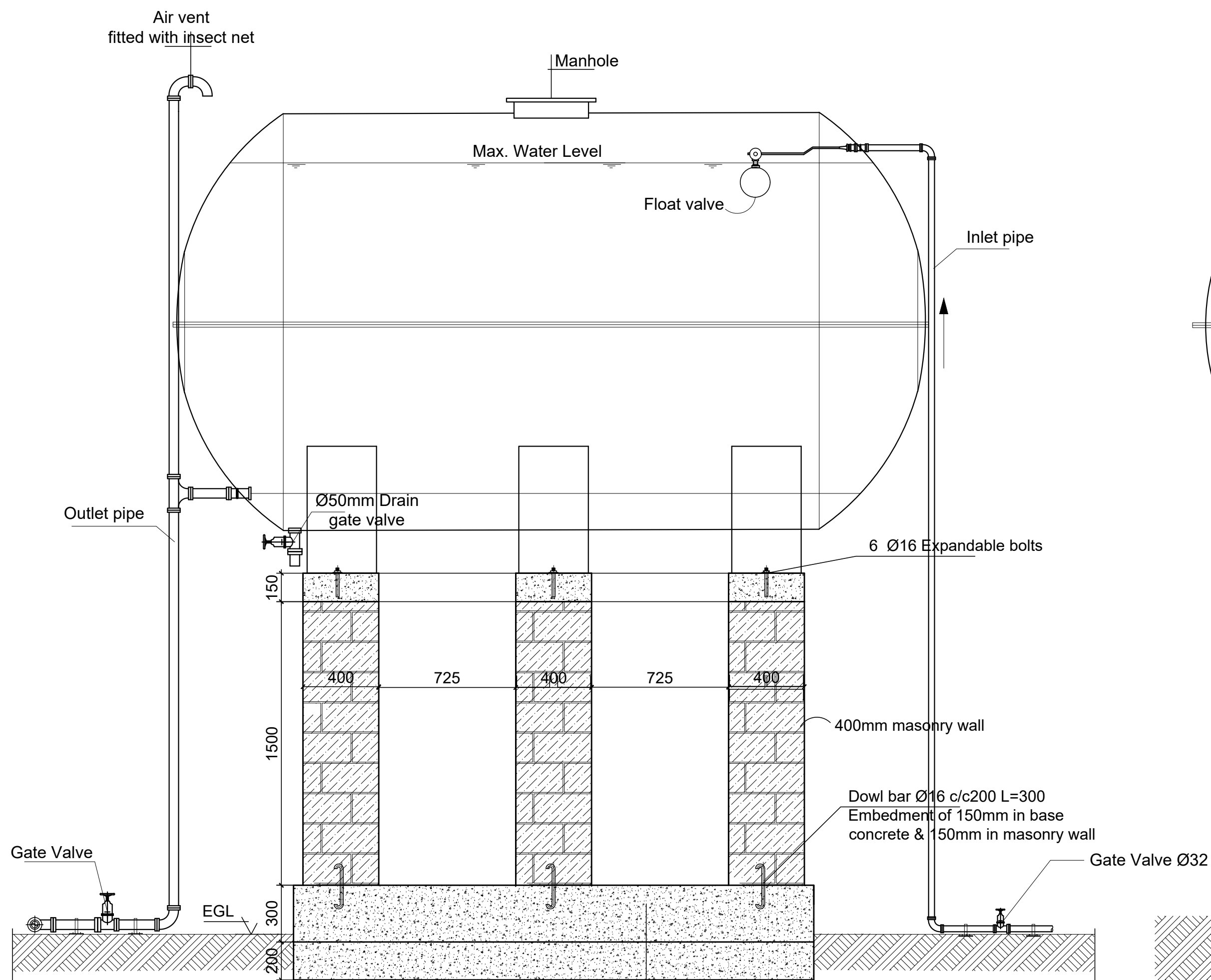


WATER RESERVOIR PLAN  
SCALE -1:25

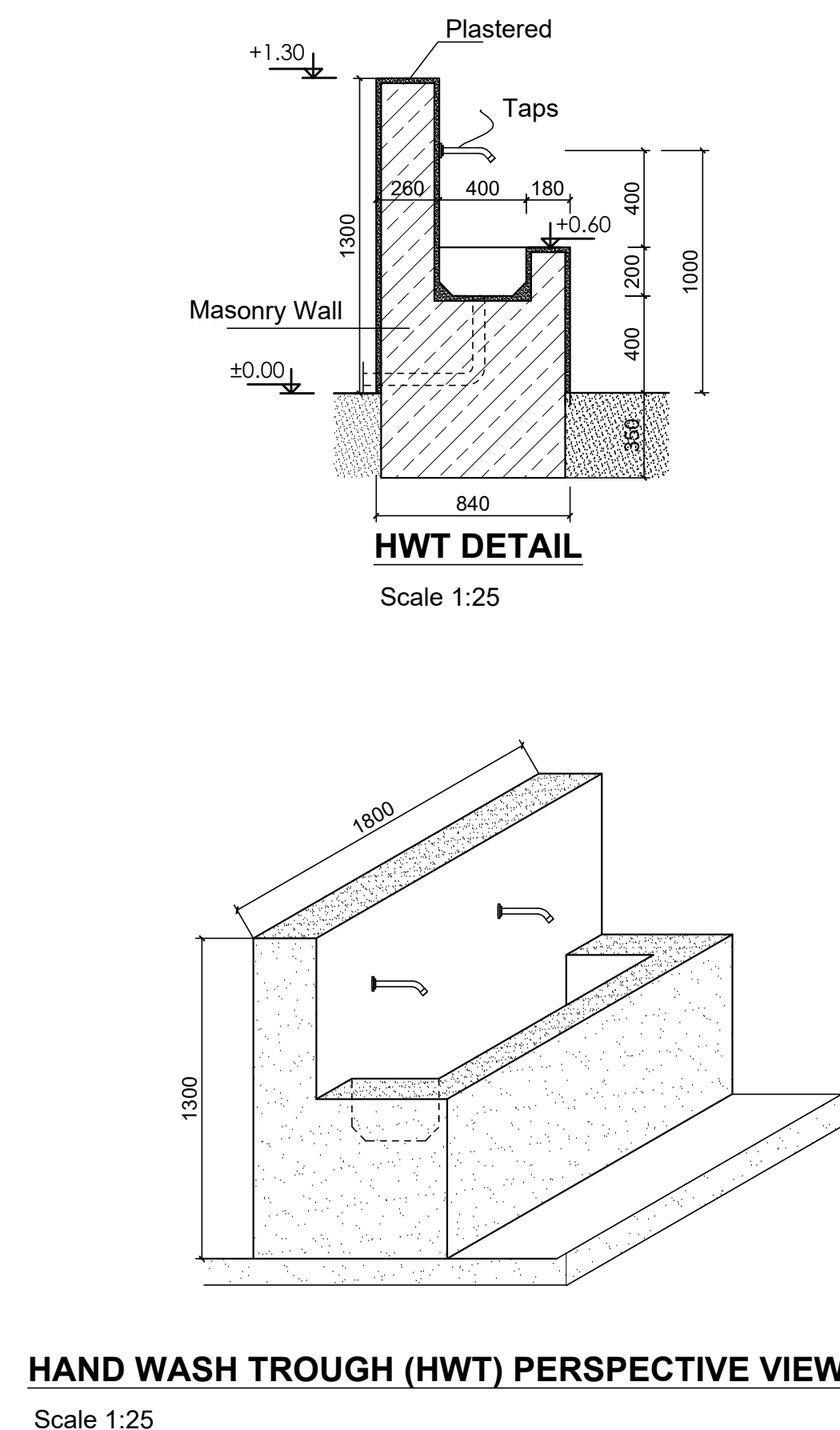
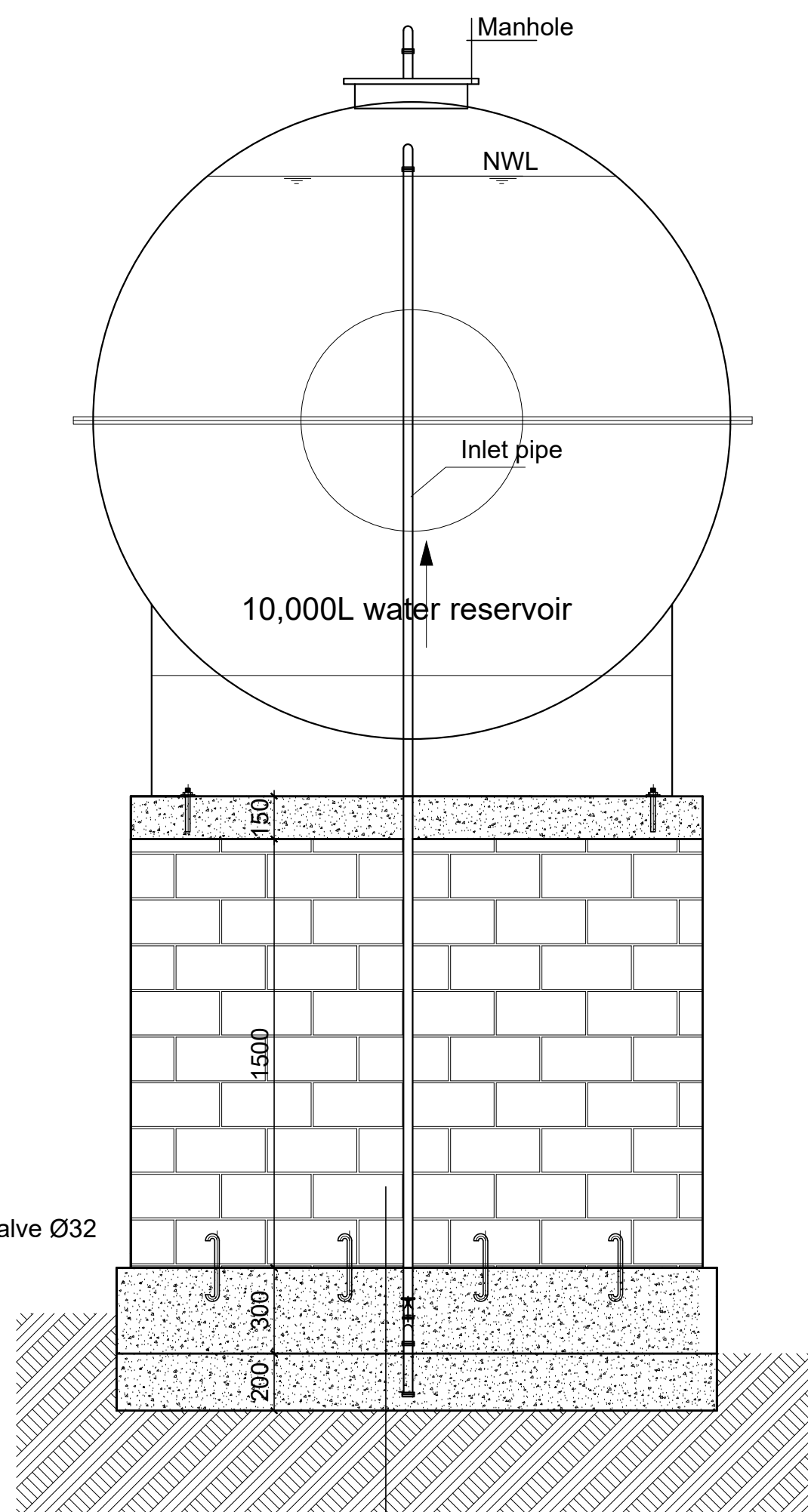
WATER TANKER SUPPORT DETAILS



K - WATER RESERVOIR



WATER TANK PLINTH  
SCALE -1:25



HAND WASH TROUGH (HWT) PERSPECTIVE VIEW  
Scale 1:25

GENERAL NOTES:

0			
Rev.:	Date:	Description:	Approved

KEY PLAN

Funded By: United Nations Higher Commission for Refugees Office for the AU ( UNHCR)		Partner: United Nations Higher Commission for Refugees Office for the AU ( UNHCR)	
Program: Rehabilitation of UNHCR One-Stop-Shop (OSS) Registration Model		Implemented By: UNOPS ,ETHIOPIA OPERATIONAL HUB	
Project Name: BOKOLMANYO OSS CENTER		Design: UNOPS ,ETHIOPIA OPERATIONAL HUB	

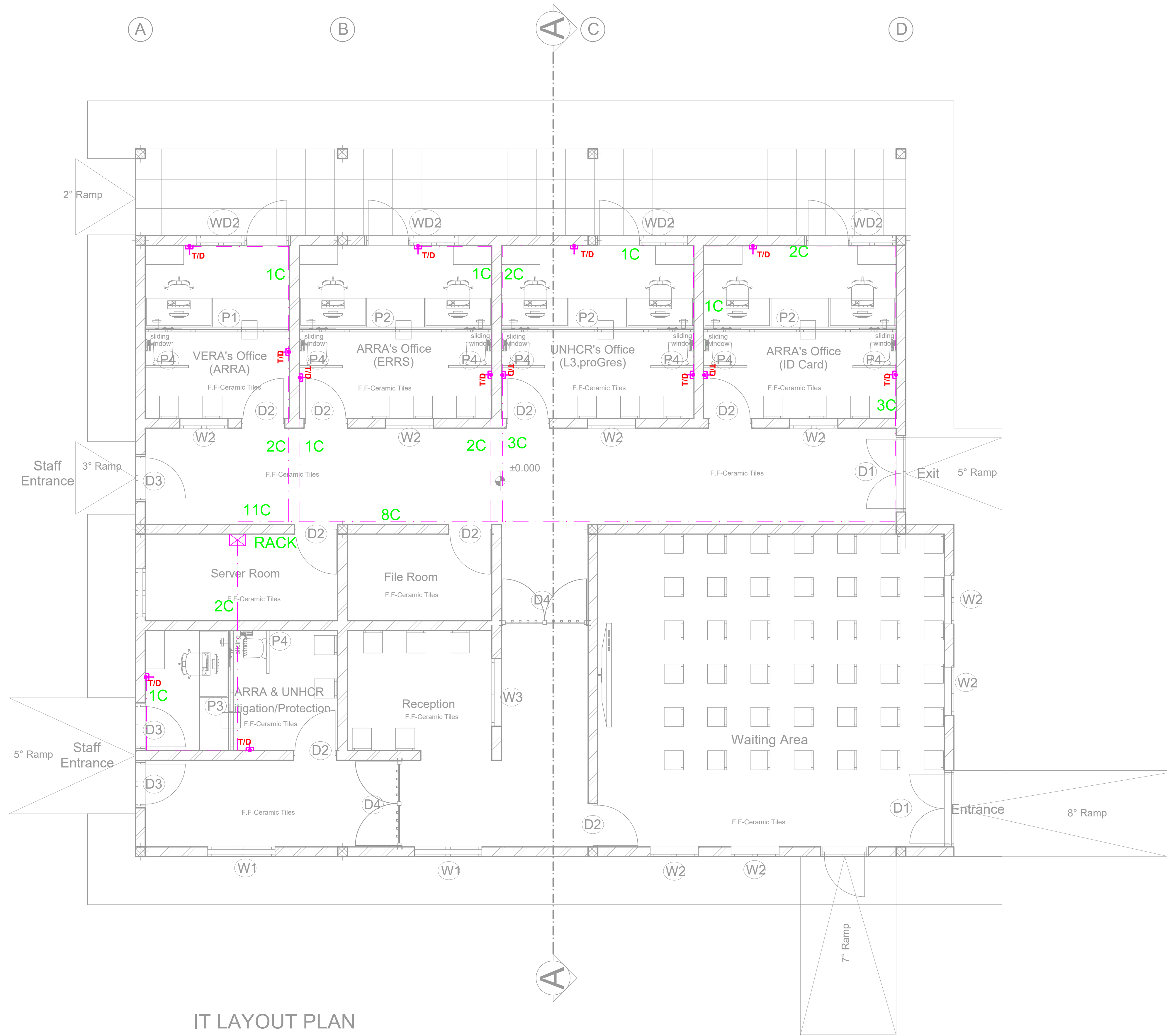
Drawing Title: WATER RESERVOIR PLAN HAND WASH TROUGH DETAILS				
Designed by	Discipline:	Dr. No:	Tot. No:	Rev No:
MM	AR	16	16	R0
Drawn:	Checked:	Approved:	Size:	Scale:
MM	BM	SM	A1	1:25
		Date:	Rev.:	
		02 / 05 / 2021	0	











IT LAYOUT PLAN

GENERAL NOTES:

LEGEND

NEW PARTITION

EXISTING WALL

SYMBOL	DESCRIPTION / MOUNTING METHOD
T/D	Data Telephone Outlet
P	Power
D	Door (see surface mounting)
O	Outlet

SYMBOL	DESCRIPTION / MOUNTING METHOD
C	Cable installed in conduit in the ground
H	Cable installed on perforated tray run horizontally
S	Cable installed in conduit on surface mounting with cable clips

SYMBOL	DESCRIPTION / MOUNTING METHOD
E	Existing cable
PS	Spotlights: Main Power Supply
MS	Main Power Supply

GENERAL NOTES

- The implementation of the different components should be aligned by the contractor in the implementation phase, with the elements of the architectural project;
- The dimensions are given as an indication, the contractor must confirm them in place and perform precise measurements before the work is done;
- All dimensions must be confirmed with the architectural project;
- All work must be done with particular care in order not to damage the pre-existing installation, to ensure the safety of the building and the workers;

Rev.	Date:	Description:	Approved
0			

KEY PLAN

All information in this document is the property of UNOPS and cannot be copied anywhere but in this project without prior written consent of UNOPS.

Funded By:	Partner:
United Nations Higher Commission for Refugees Office for the AU ( UNHCR)	United Nations Higher Commission for Refugees Office for the AU ( UNHCR)
Program:	Implemented By:
Rehabilitation of UNHCR One-Stop-Shop (OSS) Registration Model	UNOPS ETHIOPIA OPERATIONAL HUB
Project Name:	Design:
Bokolmanyu OSS Center	UNOPS ETHIOPIA OPERATIONAL HUB

Drawing Title:

DATA AND TELEPHONE OUTLET

Designed by	Discipline:	Dr. No:	Tot. No:	Rev No:		
YG	EL	03	05	R0		
Drawn:	Checked:	Approved:	Size:	Scale:	Date:	Rev.:
MA	YG		A1	1:50	02 / 10 /2021	0

## Distribution Board Schedule

Panel Name: SDB

Service Voltage: 220Vac  
(3 pole) 3 wire, AC

Bus Type :TPN+PE

Bus Rating:80A/10KA

Enclosure:Steel Sheet

## Mounting: Flash

[illegible]

Main Switch	50A/1P,MCB		KW connected(Ptot)	9.29
Feeder Cable	3x10mm2		Diversity	0.9
P.V.C conduit	Ø32mm		KW Demand(PMax)	8.36
Power Source	MDB		Current(A)	47.5

GENERAL NOTES:

## LEGEND

☐ NEW PARTITION

 EXISTING WALL

	/ /		
	/ /		
	/ /		
	/ /		
	/ /		
	/ /		
	/ /		
	/ /		
	/ /		
	/ /		
	/ /		
0	/ /		
Rev.:	Date:	Description:	Approved

## KEY PLAN

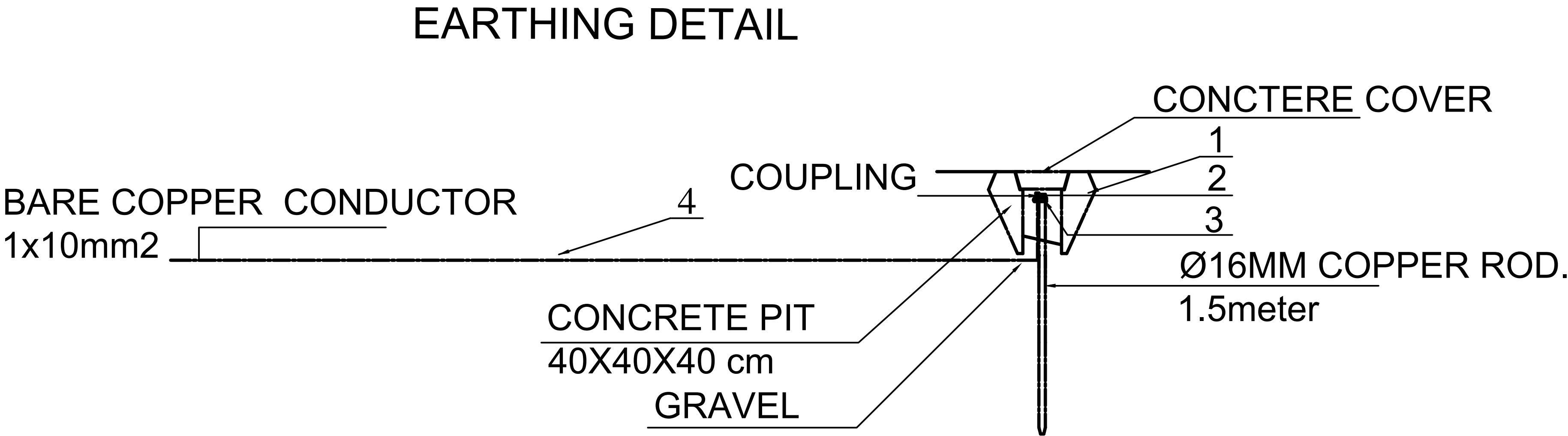
All information in this document is the property of UNOPS and cannot be copied anywhere but in this project without prior written consent of UNOPS.

<p>Funded By:</p> <p>United Nations Higher Commission for Refugees Office for the AU ( UNHCR)</p>	<p>Partner:</p> <p>United Nations Higher Commission for Refugees Office for the AU ( UNHCR)</p>
<p>Program:</p> <p>Rehabilitation of UNHCR One-Stop-Shop (OSS) Registration Model</p>	<p>Implemented By:</p> <p>UNOPS ETHIOPIA OPERATIONAL HUB</p>
<p>Project Name:</p> <p>Bokolmany OSS Center</p>	<p>Design:</p> <p>UNOPS ETHIOPIA OPERATIONAL HUB</p>

## DISTRIBUTION BOARD SCHEDULE

Designed by			Discipline:	Dr. No.:	Tot. No.:	Rev No.:		
YG			EL	04	05	R0		
Drawn:	Checked:	Approved:	Size:	Scale:	Date:	Rev.:		
MA	YG		A1	1:50	02 / 10 / 2021	0		





**LEGEND TO EARTHING SYSTEM DETAIL**

1	MANHOLE	400 x 400 x 400mm
2	DRIVIG STUD	
3	ROD TO TAPE CLAMP	
4	EARTH CONDUCTOR (bare)	1 x 10mmsq.

**NOTE:**  
NEW ROOFING SECTION IS TO BE BONDED TO THE EXISTING LPS NETWORK  
AND LED DOWN WITH 50MM2 BARE COPPER WIRE TO BE CONNECTED WITH  
THE BUILDING EARTH ROD. DOWN CONDUCTOR TO BE FASTENED ON WALL @ EVERY 1 M

GENERAL NOTES:

	/	/		
	/	/		
	/	/		
	/	/		
	/	/		
	/	/		
	/	/		
	/	/		
	/	/		
	/	/		
0	/	/		
Rev.:	Date:	Description:	Approved	

KEY PLAN

All information in this document is the property of UNOPS and cannot be copied anywhere but in this project without prior written consent of UNOPS.

Funded By:

United Nations Higher Commission for Refugees Office for the AU ( UNHCR)

Partner:

United Nations Higher Commission for Refugees Office for the AU ( UNHCR)

Program:

Rehabilitation of UNHCR One-Stop-Shop (OSS) Registration Model

Implemented By:

UNOPS ETHIOPIA OPERATIONAL HUB

Project Name:

Bokolmanyu OSS Center

Design:

UNOPS ETHIOPIA OPERATIONAL HUB

Drawing Title:

EARTHING DETAIL

Designed by	Discipline:	Dr. No:	Tot. No:	Rev No:
YG	EL	05	05	R0
Drawn:	Checked:	Approved:	Size:	Scale:
MA	YG		A1	1:50
				Date:
				02 / 10 /2021
				Rev.:
				0